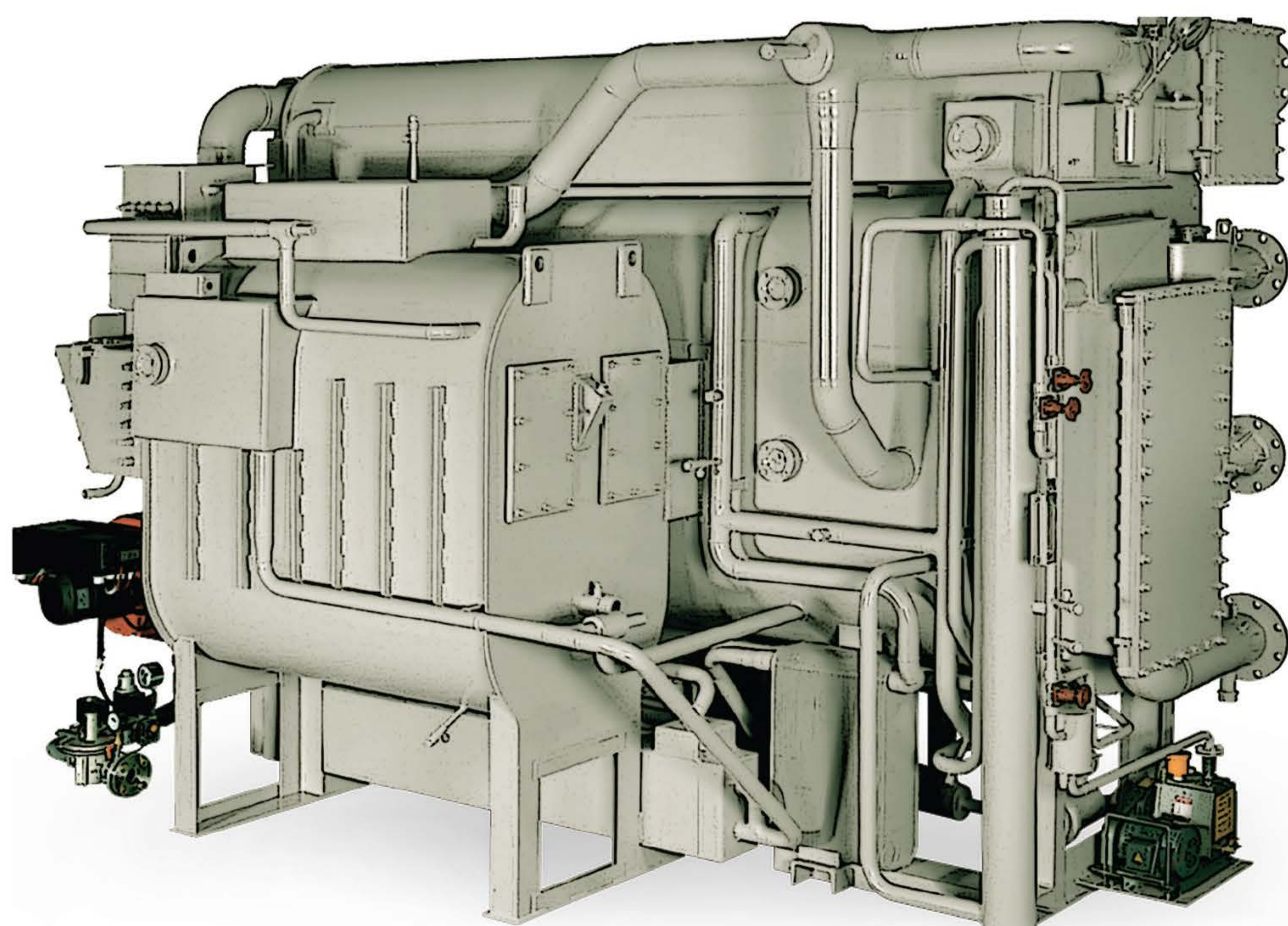




فیدار تهویه ایرانیان

Fidar Tahviah Iranian



چیلر جذبی

Absorption Chiller



فیدار تهویه ایرانیان

Fidar Tahviah Iranian

شرکت فیدار تهویه ایرانیان در سال 1397 با هدف تولید سیستم های سرمایشی و گرمایشی با کیفیت و تبدیل شدن به یک برند پیشرو در صنعت تهویه مطبوع تاسیس گردید و امروزه مفتخر است که با تکیه بر دانش مهندسین با تجربه و نیروی فنی کارآمد، با تعهد به تحقیق و نوآوری، احترام به مصرف کننده از طریق ایجاد حس رضایت در آنها و کمک به حفظ محیط زیست به این اهداف دست یافته و در صدد حفظ و ارتقاء آن می باشد.

Fidar Tahviah Iranian was established in 2018 and it has become a leading brand in heating and air-conditioning industry in Iran. Fidar Tahviah Iranian represents authenticity, elegance and reliability combined with modern and cutting-edge approach toward comfort air conditioning. By making a sense of satisfaction, ensuring long lasting durability and responsiveness to customers, we seek to form concept of "All Comfort Solutions" in customers' mind. We achieved this through an ongoing, practical commitment to research, innovation, respect for people and respect for the environment.

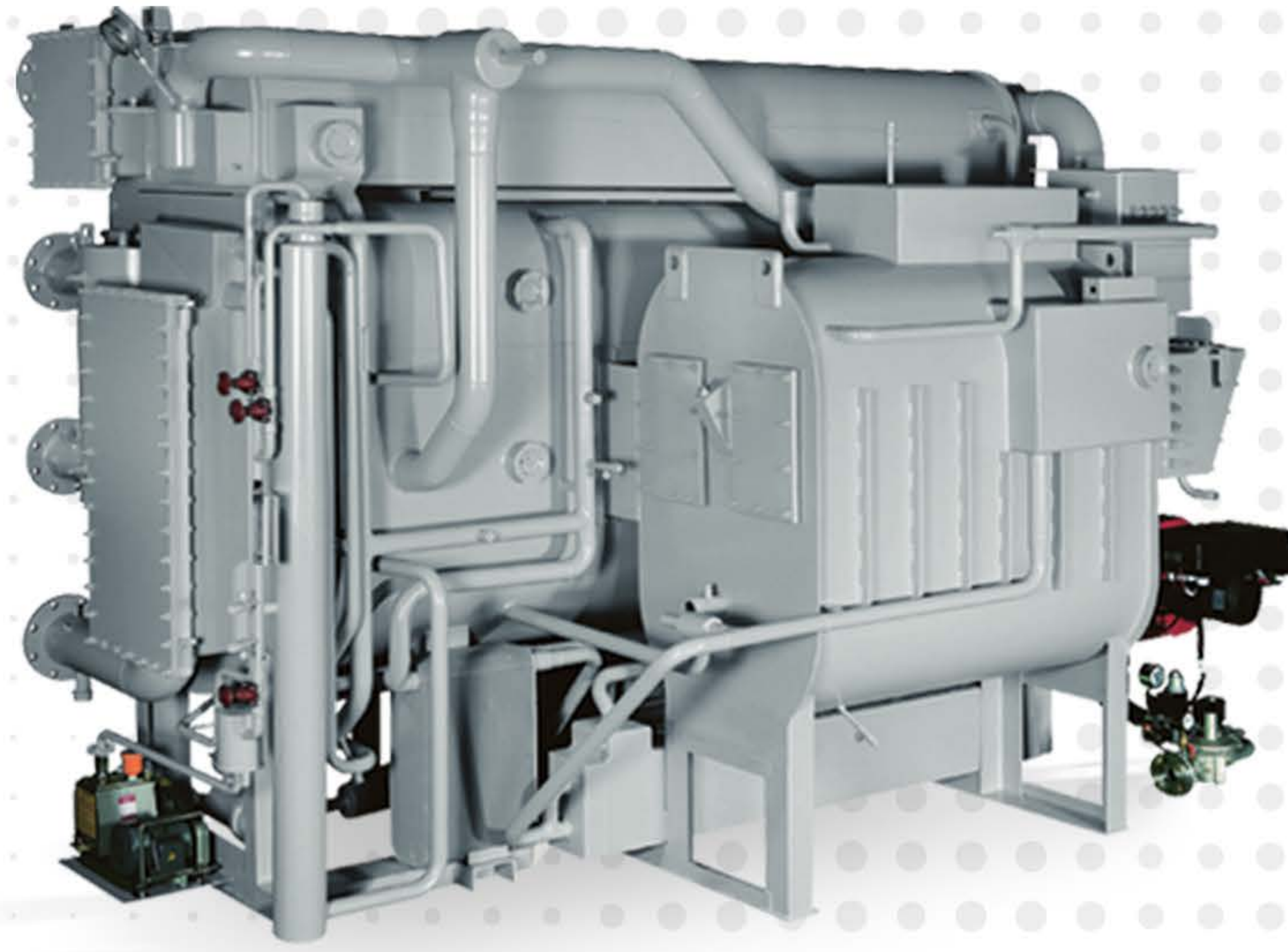
چیلر جذبی شعله مستقیم جریان سری ————— صفحه ۲

چیلر جذبی شعله مستقیم جریان موازی ————— صفحه ۱۱

چیلر جذبی اگزا است فایر ————— صفحه ۱۵

چیلر جذبی تک اثره آبگرم ————— صفحه ۱۸

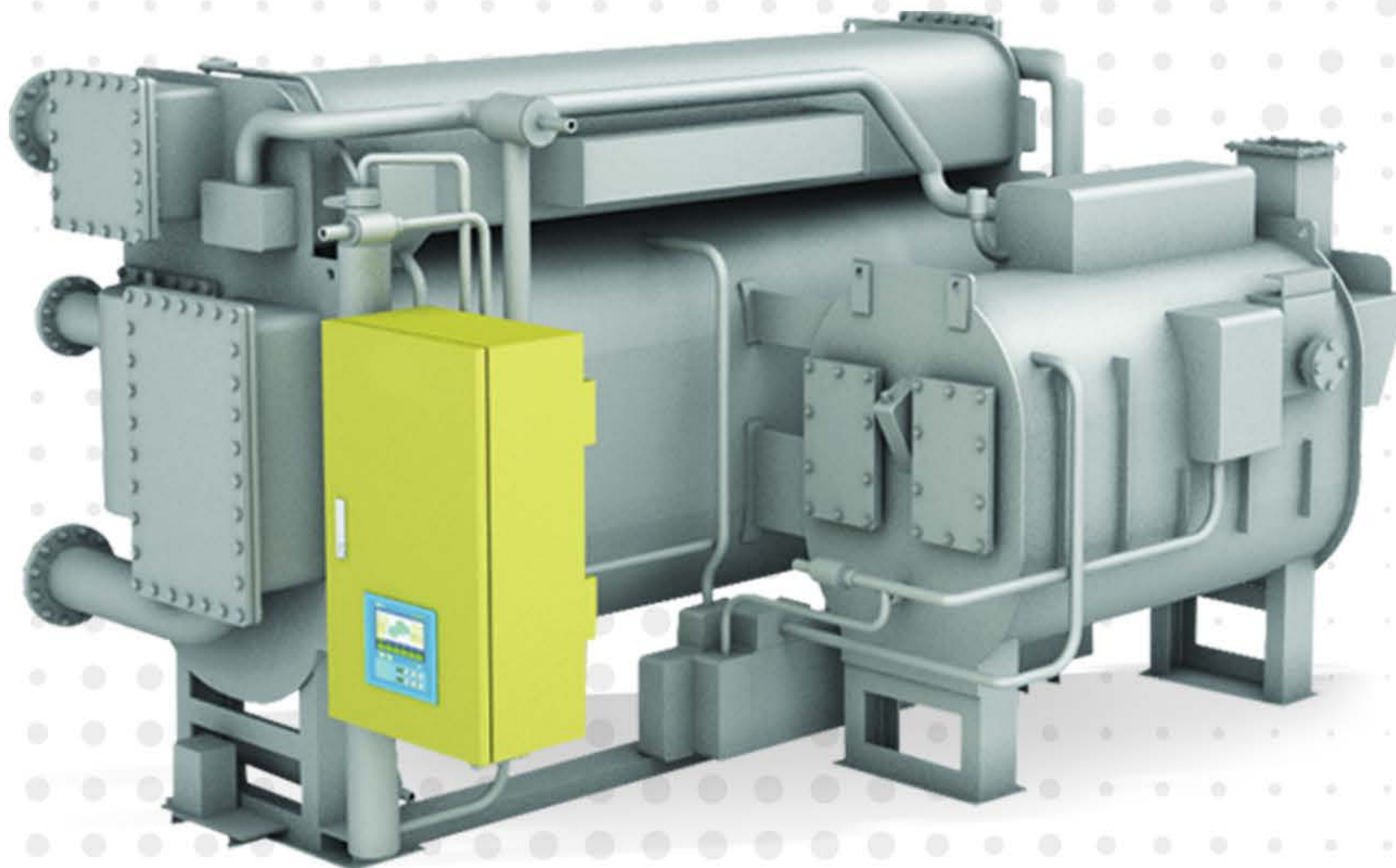
چیلر جذبی تک اثره بخار ————— صفحه ۲۲



چیلر شعله مستقیم سری H (فوق کم مصرف)

Model Name: FTI-SDFH

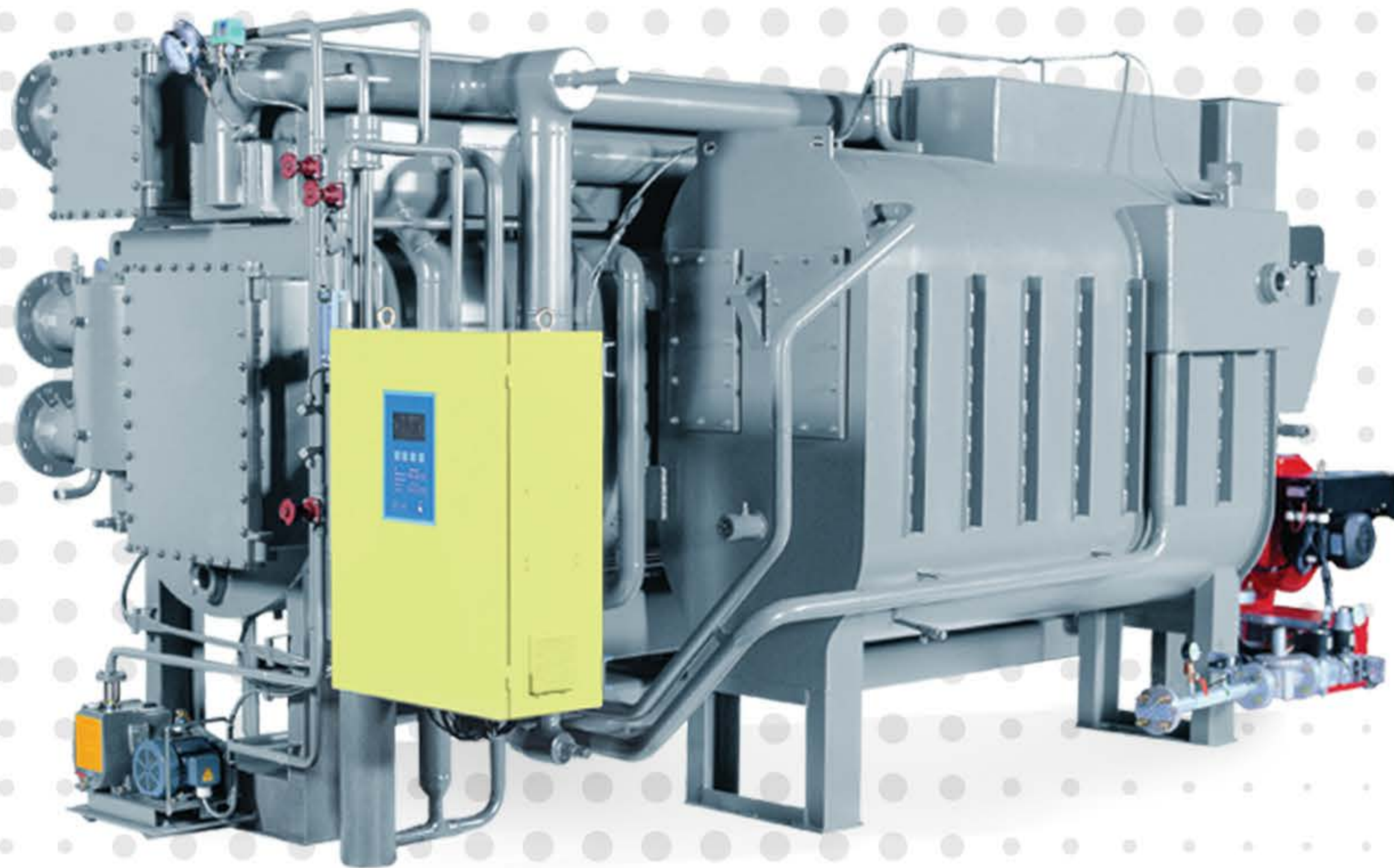
COP = 1.51



چیلر شعله مستقیم سری N (کم مصرف)

Model Name: FTI-SDFN

COP = 1.34



چیلر شعله مستقیم سری S (استاندارد)

Model Name: FTI-SDFS

COP = 1.12



چیلر شعله مستقیم سری A

Model Name: FTI-SDFA

COP = 1.06

Direct Fired Absorption Chiller Heater ( H series | COP 1.51 )

Model Name: FTI-SDFH			010	012	015	018	021	024	028	032	036	040	045	050
Cooling capacity	USRT		100	120	150	180	210	240	280	320	360	400	450	500
	kW		352	422	527	633	738	844	985	1,125	1,266	1,407	1,582	1,758
Heating capacity	kcal/h		253,000	253,000	303,600	379,500	455,400	531,300	607,200	708,400	809,600	910,800	1,012,000	1,138,500
	kW		294	294	353	441	530	618	706	824	941	1,059	1,177	1,324
Chilled water data	Temperature	°C	12 → 7.0											
	Water flow rate	m <sup>3</sup> /h	60.5	72.6	90.7	108.9	127	145.2	169.3	193.5	217.7	241.9	272.2	302.4
	Pressure drop	mAq	6.2	6.3	8.0	8.3	8.0	8.1	5.4	5.5	5.6	5.8	5.1	5.2
	Connection size	A(mm)	100	100	100	100	125	125	150	150	150	150	200	200
		B(inch)	4	4	4	4	5	5	6	6	6	6	8	8
Hot water data	Temperature	°C	56.2 → 60.0											
	Water flow rate	m <sup>3</sup> /h	60.5	72.6	90.7	108.9	127	145.2	169.3	193.5	217.7	241.9	272.2	302.4
	Pressure drop	mAq	6.2	6.3	8.0	8.3	8.0	8.1	5.4	5.5	5.6	5.8	5.1	5.2
	Connection size	A(mm)	100	100	100	100	125	125	150	150	150	150	200	200
		B(inch)	4	4	4	4	5	5	6	6	6	6	8	8
Cooling water data	Temperature	°C	32.0 ± 37.0											
	Water flow rate	m <sup>3</sup> /h	100	120	150	180	210	240	280	320	360	400	450	500
	Pressure drop	mAq	3.9	4.2	6.1	6.9	6.1	6.6	8.3	8.8	7.4	8.0	8.8	9.7
	Connection size	A(mm)	125	125	125	125	150	150	200	200	200	200	250	250
		B(inch)	5	5	5	5	6	6	8	8	8	8	10	10
Fuel (Gas)	Nozzle size	A(mm)	40 (at 4,000mmAq)						50 (at 4,000mmAq)					
		B(inch)	2/1 1 (at 4,000mmAq)						2 (at 4,000mmAq)					
	Cooling	Nm <sup>3</sup> /h	21.4	25.7	32.1	38.5	44.9	51.3	59.9	68.4	77.0	85.5	96.2	106.9
	Heating	Nm <sup>3</sup> /h	27.5	27.5	33.0	41.2	49.4	57.7	65.9	76.9	87.9	98.9	109.9	123.6
Electrical data	Source	V	3ø 440/380/220V, 50Hz/60Hz											
	Total current	A	12.2	12.2	15.6	15.6	16.8	16.8	23.9	23.9	23.9	26.9	26.9	26.9
	Wire size	mm <sup>2</sup>	4	4	4	4	4	4	6	6	10	10	10	10
	Power	kVA	8.2	9.1	10.6	11.2	12.1	12.1	15.9	17.9	19.8	19.8	17.7	17.7
	Absorbent pump no.1	kW(A)	5.43(1.5)	5.43(1.5)	6.4(2.4)	6.4(2.4)	6.4(2.4)	6.4(2.4)	10.3(3.4)	10.3(3.4)	10.3(3.4)	10.3(3.4)	10.3(3.4)	10.3(3.4)
	Absorbent pump no.2	kW(A)	1.6(0.4)	1.6(0.4)	4.0(1.2)	4.0(1.2)	4.0(1.2)	4.0(1.2)	5.5(1.5)	5.5(1.5)	5.5(1.5)	5.5(1.5)	5.2(2.0)	5.2(2.0)
	Refrigerant pump	kW(A)	1.1(0.2)	1.1(0.2)	1.1(0.2)	1.1(0.2)	1.1(0.2)	1.1(0.2)	1.4(0.4)	1.4(0.4)	1.4(0.4)	1.4(0.4)	1.4(0.4)	1.4(0.4)
	Purge pump	kW(A)	1.45(0.4)	1.45(0.4)	1.45(0.4)	1.45(0.4)	1.45(0.4)	1.45(0.4)	1.45(0.4)	1.45(0.4)	1.45(0.4)	1.45(0.4)	1.45(0.4)	1.45(0.4)
Burner blower (gas)	kW(A)	2.1(0.72)	2.1(0.72)	2.1(0.72)	3.3(1.5)	3.3(1.5)	3.3(1.5)	4.7(2.2)	4.7(2.2)	4.7(2.2)	7.7(3.7)	7.7(3.7)	7.7(3.7)	
Dimension	Length	mm	2,895	2,895	3,745	3,745	3,795	3,795	4,815	4,815	4,890	4,890	4,900	4,900
	Width	mm	1,965	1,965	1,965	2,095	2,150	2,170	2,225	2,225	2,430	2,515	2,765	2,855
	Height	mm	2,070	2,070	2,070	2,070	2,415	2,415	2,415	2,415	2,590	2,590	2,925	2,925
Rigging	Operating	ton	4.9	5.2	6.2	6.9	8.0	8.6	10.4	10.9	12.4	13.2	15.5	17.3
	Total shipping	ton	4.7	4.9	5.8	6.4	7.3	7.9	9.5	10.0	11.1	11.9	13.9	15.6
	Flue Connection Size	ton	3.8	4.0	4.6	5.0	5.8	6.1	7.4	7.8	8.7	9.4	11.0	12.4
Flue connection size	mm	340 x 320	340 x 320	340 x 320	340 x 320	340 x 320	380 x 430	380 x 430	380 x 430	380 x 430	450 x 430	450 x 430	520 x 550	
Clearance for tube removal	mm	2,400	2,400	3,400	3,400	3,400	3,400	4,500	4,500	4,500	4,500	4,500	4,500	

- Note:
- 1.usRT=3,024kcal/h, 1kW= 860kcal/h
  2. Standard Tube and Water Side Pressure(Chiller & Cooling Water Circuit): 10kg/G(981 kPa)
  3. Standard gas prssure:4,000mmAg
  4. Standard low calorific value :9,360 kcal/N
  5. Currents & Electricity Consumptions are based on 3ø 380V 60HZ
  6. Power supply wire size is based on the due of metal conduit and 40°C of ambient temperatue.
  7. The specifications are subject to change without prior notice.
  8. Fouling factor of water side: 0.0001 mhr C/kcal

Direct Fired Absorption Chiller Heater ( H series | COP 1.51 )

Model Name: FTI-SDFH			056	063	070	080	090	100	110	120	130	140	150	
Cooling capacity	USRT		560	630	700	800	900	1,000	1,100	1,200	1,300	1,400	1,500	
	kW		1,969	2,215	2,461	2,813	3,165	3,516	3,868	4,220	4,571	4,923	5,274	
Heating capacity	kcal/h		1,265,000	1,416,800	1,593,900	1,771,000	2,024,000	2,277,000	2,530,000	2,783,000	3,036,000	3,289,000	3,542,000	
	kW		1,471	1,647	1,853	2,059	2,353	2,648	2,942	3,236	3,530	3,824	4,119	
Chilled water data	Temperature	°C	12 → 7.0											
	Water flow rate	m <sup>3</sup> /h	338.7	381	423.4	483.8	544.3	604.8	665.3	725.8	786.2	846.7	907.2	
	Pressure drop	mAq	5.2	7.2	9.6	4.4	6.0	7.9	5.8	6.1	9.2	7.6	9.3	
	Connection size	A(mm)	200	200	200	250	250	250	300	300	300	350	350	
		B(inch)	8	8	8	10	10	10	12	12	12	14	14	
Hot water data	Temperature	°C	56.2 → 60.0											
	Water flow rate	m <sup>3</sup> /h	338.7	381	423.4	483.8	544.3	604.8	665.3	725.8	786.2	846.7	907.2	
	Pressure drop	mAq	5.2	7.2	9.6	4.4	6.0	7.9	5.8	6.1	9.2	7.6	9.3	
	Connection size	A(mm)	200	200	200	250	250	250	300	300	300	350	350	
		B(inch)	8	8	8	10	10	10	12	12	12	14	14	
Cooling water data	Temperature	°C	32.0 ↔ 37.0											
	Water flow rate	m <sup>3</sup> /h	560	630	700	800	900	1,000	1,100	1,200	1,300	1,400	1,500	
	Pressure drop	mAq	8.9	11.9	15.3	6.9	9.3	12.3	9.2	11.7	14.6	11.4	13.9	
	Connection size	A(mm)	300	300	300	350	350	350	400	400	400	400	400	
		B(inch)	12	12	12	14	14	14	16	16	16	16	16	
Fuel (Gas)	Nozzle size	A(mm)	50 (at 4,000mmAq)					65 (at 4,000mmAq)						
		B(inch)	2 (at 4,000mmAq)					2/1 2 (at 4,000mmAq)						
	Cooling	Nm <sup>3</sup> /h	119.7	134.7	149.7	171.0	192.4	213.8	235.2	256.6	277.9	299.3	320.7	
	Heating	Nm <sup>3</sup> /h	137.4	153.8	173.1	192.3	219.8	247.2	274.7	302.2	329.6	357.1	384.6	
Electrical data	Source	V	3ø 440/380/220V, 50Hz/60Hz											
	Total current	A	35.7	35.7	35.7	44.4	49.4	55.9	73.7	73.7	73.7	73.7	73.7	
	Wire size	mm <sup>2</sup>	16	16	16	16	25	35	35	35	35	35	35	
	Power	kVA	23.5	23.5	23.5	29.2	32.5	36.8	48.5	48.5	48.5	48.5	48.5	
	Absorbent pump no.1	kW(A)	16.2(6.6)	16.2(6.6)	16.2(6.6)	20.0(5.5)	25.0(7.5)	25.0(7.5)	25.0(7.5)	25.0(7.5)	25.0(7.5)	25.0(7.5)	25.0(7.5)	
	Absorbent pump no.2	kW(A)	5.2(2.0)	5.2(2.0)	5.2(2.0)	6.7(2.2)	6.7(2.2)	6.7(2.2)	21.0(5.5)	21.0(5.5)	21.0(5.5)	21.0(5.5)	21.0(5.5)	
	Refrigerant pump	kW(A)	1.4(0.4)	1.4(0.4)	1.4(0.4)	1.4(0.4)	1.4(0.4)	1.4(0.4)	3.9(1.5)	3.9(1.5)	3.9(1.5)	3.9(1.5)	3.9(1.5)	
	Purge pump	kW(A)	1.45(0.4)	1.45(0.4)	1.45(0.4)	1.45(0.4)	1.45(0.4)	1.45(0.4)	2.5(0.75)	2.5(0.75)	2.5(0.75)	2.5(0.75)	2.5(0.75)	
	Burner blower (gas)	kW(A)	10.6(5.5)	10.6(5.5)	10.6(5.5)	14.0(7.5)	14.0(7.5)	14.0(7.5)	20.5(11.0)	20.5(11.0)	20.5(11.0)	20.5(11.0)	20.5(11.0)	
Dimension	Length	mm	5,310	5,520	6,010	5,610	6,200	6,700	6,200	6,700	7,200	6,850	7,350	
	Width	mm	3,025	3,150	3,150	3,800	4,050	4,050	4,400	4,400	4,400	4,800	4,800	
	Height	mm	3,295	3,295	3,295	3,550	3,600	3,600	3,800	3,800	3,800	3,900	3,900	
Rigging	Operating	ton	21.2	24.4	27.2	31.6	33.9	37.1	40.4	44.1	48.1	52.1	55.9	
	Total shipping	ton	18.7	21.6	24.3	27.8	29.7	32.7	36.1	39.6	43.2	46.7	50.2	
	Flue Connection Size	ton	15.0	17.5	19.5	21.0	22.5	24.0	26.0	28.0	30.0	32.0	34.0	
Flue connection size	mm	520 x 550	650 x 550	650 x 550	650 x 550	750 x 550	750 x 550	750 x 550	850 x 550	850 x 550	850 x 550	950 x 550		
Clearance for tube removal	mm	4,500	5,200	5,700	5,200	5,700	6,200	5,700	6,200	6,700	6,200	6,700		

Note:

- 1.usRT=3,024kcal/h, 1kW= 860kcal/h
2. Standard Tube and Water Side Pressure(Chiller & Cooling Water Circuit): 10kg/G(981 kPa)
3. Standard gas prssure:4,000mmAg
4. Standard low calorific value :9,360 kcal/N
5. Currents & Electricity Consumptions are based on 3ø 380V 60HZ
6. Power supply wire size is based on the due of metal conduit and 40°C of ambient temperatue.
7. The specifications are subject to change without prior notice.
8. Fouling factor of water side: 0.0001 mhr C/kcal

Direct Fired Absorption Chiller Heater ( N series | COP 1.34 )

Model Name: FTI-SDFN			010	012	015	018	021	024	028	032
Cooling capacity	RT		100	120	150	180	210	240	280	320
	kW		352	422	528	633	739	844	985	1,125
Heating capacity	kcal/h		253,000	303,600	379,500	455,400	531,300	607,200	708,400	809,600
	kW		294	353	441	530	618	706	824	941
Chilled water data	Temperature	°C	12 → 7							
	Water flow rate	m <sup>3</sup> /h	60.5	72.6	90.7	108.9	127.0	145.2	169.3	193.5
	Pressure drop	mAq	5.3	5.7	5.2	5.7	4.7	5.2	10.7	10.7
	Connection size	A(mm)	100	100	100	100	125	125	150	150
		B(inch)	4	4	4	4	5	5	6	6
Hot water data	Temperature	°C	55.8 → 60							
	Water flow rate	m <sup>3</sup> /h	60.5	72.6	90.7	108.9	127.0	145.2	169.3	193.5
	Pressure drop	mAq	5.3	5.7	5.2	5.7	4.7	5.2	10.7	10.7
	Connection size	A(mm)	100	100	100	100	125	125	150	150
		B(inch)	4	4	4	4	5	5	6	6
Cooling water data	Temperature	°C	32 → 37.2							
	Water flow rate	m <sup>3</sup> /h	100	120	150	180	210	240	280	320
	Pressure drop	mAq	7.8	8.2	8.1	8.6	8.5	9.3	14.5	15.1
	Connection size	A(mm)	125	125	125	125	150	150	200	200
		B(inch)	5	5	5	5	6	6	8	8
Fuel (Gas)	Nozzle size	A(mm)	40 (at 4,000mAq)							
		B(inch)	1 1/2 (at 4,000mAq)							
	Cooling	Nm <sup>3</sup> /h	24.0	28.8	36.0	43.3	50.5	57.7	67.3	76.9
	Heating	Nm <sup>3</sup> /h	28.9	34.6	43.3	52.0	60.6	69.3	80.8	92.4
Electrical data	Source	V	3ø 220/380/440V 50Hz (60Hz)							
	Total current	A	12.7	12.7	15.9	17.8	17.8	17.8	23.9	24.5
	Wire size	mm <sup>2</sup>	4	4	4	6	6	6	10	10
	Power	kVA	8.3	8.3	10.4	11.7	11.7	11.7	15.7	16.1
	Absorbent pump no.1	kW(A)	1.5(5.43)	1.5(5.43)	2.4(6.4)	2.4(6.4)	2.4(6.4)	2.4(6.4)	3.4(10.3)	3.4(10.3)
	Absorbent pump no.2	kW(A)	0.4(1.8)	0.4(1.8)	1.2(4.0)	1.2(4.0)	1.2(4.0)	1.2(4.0)	1.5(5.5)	1.5(5.5)
	Refrigerant pump	kW(A)	(1.1)0.2	(1.1)0.2	0.2(1.1)	0.2(1.1)	0.2(1.1)	0.2(1.1)	0.4(1.4)	0.4(1.4)
	Purge pump	kW(A)	0.4(1.45)							
Dimension	Length	mm	2,870	3,070	3,740	3,740	3,770	3,845	4,790	4,790
	Width	mm	1,910	1,910	2,015	2,015	2,200	2,200	2,235	2,235
	Height	mm	2,130	2,130	2,130	2,130	2,280	2,280	2,280	2,280
Rigging	Operating	Ton	4.8	5.1	6.1	6.7	7.9	8.2	9.2	9.8
	Total shipping	Ton	4.0	4.2	5.1	5.6	6.4	7.6	8.1	8.7
Flue connection size	mm	280x210	280x210	280x210	280x210	310x310	310x310	310x310	310x310	
Clearance for tube removal	mm	2,400	2,400	3,400	3,400	3,400	3,400	4,500	4,500	

Note:

- 1.usRT=3,024kcal/h, 1kW= 860kcal/h
2. Standard Tube and Water Side Pressure(Chiller & Cooling Water Circuit): 10kg/G(981 kPa)
3. Standard gas prssure:4,000mmAg
4. Standard low calorific value :9,360 kcal/N
5. Currents & Electricity Consumptions are based on 3ø 380V 60HZ
6. Power supply wire size is based on the due of metal conduit and 40°C of ambient temperatue.
7. The specifications are subject to change without prior notice.
8. Fouling factor of water side: 0.0001 mhr C/kcal

Direct Fired Absorption Chiller Heater ( N series | COP 1.34 )

Model Name: FTI-SDFN			036	040	045	050	056	063	070
Cooling capacity	RT		360	400	450	500	560	630	700
	kW		1,266	1,407	1,583	1,758	1,969	2,216	2,462
Heating capacity	kcal/h		910,800	1,012,000	1,138,500	1,265,000	1,416,800	1,593,900	1,771,000
	kW		1,059	1,177	1,324	1,471	1,647	1,853	2,059
Chilled water data	Temperature	°C	12 → 7						
	Water flow rate	m <sup>3</sup> /h	217.7	241.9	272.2	302.4	338.7	381.0	423.4
	Pressure drop	mAq	10.8	11.6	10.7	11.0	5.5	7.6	10.1
	Connection size	A(mm)	150	150	200	200	200	200	200
		B(inch)	6	6	8	8	8	8	8
Hot water data	Temperature	°C	55.8 → 60						
	Water flow rate	m <sup>3</sup> /h	217.7	241.9	272.2	302.4	338.7	381.0	423.4
	Pressure drop	mAq	10.8	11.6	10.7	11.0	5.5	7.6	10.1
	Connection size	A(mm)	150	150	200	200	200	200	200
		B(inch)	6	6	8	8	8	8	8
Cooling water data	Temperature	°C	32 → 37.2						
	Water flow rate	m <sup>3</sup> /h	360	400	450	500	560	630	700
	Pressure drop	mAq	14.8	15.5	14.2	14.2	9.1	12.2	15.9
	Connection size	A(mm)	200	200	250	250	300	300	300
		B(inch)	8	8	12	12	12	12	12
Fuel (Gas)	Nozzle size	A(mm)	40 (at 4,000mmAq)			50 (at 4,000mmAq)			
		B(inch)	1 1/2 (at 4,000mmAq)			2 (at 4,000mmAq)			
	Cooling	Nm <sup>3</sup> /h	86.5	96.1	108.1	120.2	134.6	151.4	168.2
	Heating	Nm <sup>3</sup> /h	103.9	115.5	129.9	144.4	161.7	181.9	202.1
Electrical data	Source	V	3ø 220/380/440V 50Hz (60Hz)						
	Total current	A	24.5	26.0	25.7	25.7	38.1	38.1	38.1
	Wire size	mm <sup>2</sup>	10	10	10	10	16	16	16
	Power	kVA	16.1	17.1	16.9	16.9	25	25	25
	Absorbent pump no.1	kW(A)	3.4 (10.3)	3.4 (10.3)	3.4 (10.3)	3.4 (10.3)	6.6 (16.2)	6.6 (16.2)	6.6 (16.2)
	Absorbent pump no.2	kW(A)	1.5 (5.5)	1.5 (5.5)	2.0 (5.2)	2.0 (5.2)	2.0 (5.2)	2.0 (5.2)	2.0 (5.2)
	Refrigerant pump	kW(A)	0.4 (1.4)						
	Purge pump	kW(A)	0.4 (1.45)						
	Burner blower (Gas)	kW(A)	2.2 (5.0)	3.0 (6.5)	3.0 (6.5)	3.0 (6.5)	5.5(13.0)	5.5(13.0)	5.5(13.0)
Dimension	Length	mm	4,915	4,915	4,915	4,915	4,975	5,520	6,015
	Width	mm	2,480	2,480	2,720	2,720	3,280	3,280	3,280
	Height	mm	2,535	2,535	2,790	2,790	3,240	3,240	3,240
Rigging	Operating	Ton	12.3	12.7	15.2	15.6	22.0	23.7	25.5
	Total shipping	Ton	10.8	11.1	13.3	13.4	19.3	20.8	22.3
Flue connection size	mm	360x310	360x310	410x310	410x310	500x350	500x350	500x350	
Clearance for tube removal	mm	4,500	4,500	4,500	4,500	4,600	5,200	5,700	

- Note:
- 1.usRT=3,024kcal/h, 1kW= 860kcal/h
  2. Standard Tube and Water Side Pressure(Chiller & Cooling Water Circuit): 10kg/G(981 kPa)
  3. Standard gas prssure:4,000mmAg
  4. Standard low calorific value :9,360 kcal/N
  5. Currents & Electricity Consumptions are based on 3ø 380V 60HZ
  6. Power supply wire size is based on the due of metal conduit and 40°C of ambient temperatue.
  7. The specifications are subject to change without prior notice.
  8. Fouling factor of water side: 0.0001 mhr C/kcal



Direct Fired Absorption Chiller Heater ( S series | COP 1.12 )

Model Name: FTI-SDFS			010	12	015	018	021	024	028	032	036	040	045	050	
Cooling capacity	RT		100	120	150	180	210	240	280	320	360	400	450	500	
	kW		352	422	528	633	739	844	985	1125	1266	1407	1583	1758	
Heating capacity	kcal/h		253,000	303,600	379,500	455,400	531,300	607,200	708,400	809,600	910,800	1,012,000	1,138,500	1,265,000	
	kW		294	353	441	529	617	706	823	941	1059	1176	1323	1470	
Chilled water data	Temperature	°C	12 → 7												
	Water flow rate	m <sup>3</sup> /h	60.5	72.6	90.7	108.9	127.0	145.2	169.3	193.5	217.7	241.9	272.2	302.4	
	Pressure drop	mAq	6.5	6.6	8.0	8.3	7.5	7.9	5.1	5.5	5.8	6.1	5.2	5.5	
	Connection size	A(mm)		100	100	100	100	125	125	150	150	150	150	200	200
		B(inch)		4	4	4	4	5	5	6	6	6	6	8	8
Hot water data	Temperature	°C	55.8 → 60												
	Water flow rate	m <sup>3</sup> /h	60.5	72.6	90.7	108.9	127.0	145.2	169.3	193.5	217.7	241.9	272.2	302.4	
	Pressure drop	mAq	6.5	6.6	8.0	8.3	7.5	7.9	5.1	5.5	5.8	6.1	5.2	5.5	
	Connection size	A(mm)		100	100	100	100	125	125	150	150	150	150	200	200
		B(inch)		4	4	4	4	5	5	6	6	6	6	8	8
Cooling water data	Temperature	°C	32 → 37.5												
	Water flow rate	m <sup>3</sup> /h	100	120	150	180	210	240	280	320	360	400	450	500	
	Pressure drop	mAq	3.9	4.4	6.5	7.7	5.6	6.2	10.9	12.1	8.7	9.4	10.3	11.2	
	Connection size	A(mm)		125	125	125	125	150	150	200	200	200	200	250	250
		B(inch)		5	5	5	5	6	6	8	8	8	8	10	10
Fuel (gas)	Cooling	Nm <sup>3</sup> /h	28.9	34.6	43.3	52.0	60.6	69.3	80.8	92.4	103.9	115.5	129.9	144.4	
	Heating	Nm <sup>3</sup> /h	28.9	34.6	43.3	52.0	60.6	69.3	80.8	92.4	103.9	115.5	129.9	144.4	
Electrical data	Source	V	3ø 220/380/440 V 50Hz (60Hz)												
	Total current	A	10.6	10.6	11.6	13.5	13.5	13.5	18.1	18.7	18.7	20.2	21.9	21.9	
	Wire size	mm <sup>2</sup>	4	4	4	4	4	4	4	4	4	6	6	6	
	Power	kVA	7.0	7.0	7.6	8.9	8.9	8.9	11.9	12.3	12.3	13.3	14.4	14.4	
	Absorbent pump no.1	kW(A)	1.5(5.43)	1.5(5.43)	2.4(6.4)	2.4(6.4)	2.4(6.4)	2.4(6.4)	3.4(10.3)	3.4(10.3)	3.4(10.3)	3.4(10.3)	3.7(12.0)	3.7(12.0)	
	Absorbent pump no.2	kW(A)	n/a												
	Refrigerant pump	kW(A)	0.2(1.1)	0.2(1.1)	0.2(1.1)	0.2(1.1)	0.2(1.1)	0.2(1.1)	0.4(1.4)	0.4(1.4)	0.4(1.4)	0.4(1.4)	0.4(1.4)	0.4(1.4)	
	Purge pump	kW(A)	0.4(1.45)												
Burner blower (gas)	kW(A)	0.72(2.1)	0.72(2.1)	0.72(2.1)	1.1(4.0)	1.5(4.0)	1.5(4.0)	1.8(4.4)	2.2(5.0)	2.2(5.0)	3.0(6.5)	3.0(6.5)	3.0(6.5)		
Dimension	Length	mm	2700	2700	3720	3,720	3,740	3,740	4,780	4,780	4,890	4,890	4,870	4,870	
	Width	mm	1,990	1,990	1,990	2,010	2,190	2,210	2,170	2,170	2,310	2,350	2,570	2,570	
	Height	mm	2,030	2,030	2,030	2,030	2,300	2,300	2,300	2,300	2,540	2,540	2,765	2,765	
Rigging	Operating	ton	4.8	5.1	6.1	6.7	7.9	8.2	9.2	9.8	12.3	12.7	15.2	15.6	
	Total shipping	ton	3.2	3.3	4.0	4.3	5.0	6.0	6.2	6.7	8.4	8.6	10.3	10.5	
Flue connection size	mm	280x210	280x210	280x210	280x210	310x310	310x310	310x310	310x310	360x310	360x310	410x310	410x310		
Clearance for tube removal	mm	2,400	2,400	3,400	3,400	3,400	3,400	3,400	4,500	4,500	4,500	4,500	4,500		

- Note:
- 1.usRT=3,024kcal/h, 1kW= 860kcal/h
  2. Standard Tube and Water Side Pressure(Chiller & Cooling Water Circuit): 10kg/G(981 kPa)
  3. Standard gas prssure:4,000mmAg
  4. Standard low calorific value :9,360 kcal/N
  5. Currents & Electricity Consumptions are based on 3ø 380V 60HZ
  6. Power supply wire size is based on the due of metal conduit and 40°C of ambient temperatue.
  7. The specifications are subject to change without prior notice.
  8. Fouling factor of water side: 0.0001 mhr C/kcal

Direct Fired Absorption Chiller Heater ( S series | COP 1.12 )

Model Name: FTI-SDFS			056	063	070	080	090	100	110	120	130	140	150	
Cooling capacity	RT		560	630	700	800	900	1,000	1,100	1,200	1,300	1,400	1,500	
	kW		1,969	2,216	2,462	2,813	3,165	3,517	3,869	4,220	4,572	4,924	5,275	
Heating capacity	kcal/h		1,416,800	1,593,900	1,771,000	2,024,000	2,277,000	2,530,000	2,783,000	3,036,000	3,289,000	3,542,000	3,795,000	
	kW		1,647	1,852	2,058	2,352	2,646	2,940	3,234	3,529	3,823	4,117	4,411	
Chilled water data	Temperature	°C	12 → 7											
	Water flow rate	m <sup>3</sup> /h	338.7	381.0	423.4	483.8	544.3	604.8	665.3	725.8	786.2	846.7	907.2	
	Pressure drop	mAq	5.2	7.1	9.4	4.7	6.4	8.4	6.2	7.9	9.8	8.0	9.8	
	Connection size	A(mm)	200	200	200	250	250	250	300	300	300	300	350	350
		B(inch)	8	8	8	10	10	10	12	12	12	12	14	14
Hot water data	Temperature	°C	55.8 → 60											
	Water flow rate	m <sup>3</sup> /h	338.7	381.0	423.4	483.8	544.3	604.8	665.3	725.8	786.2	846.7	907.2	
	Pressure drop	mAq	5.2	7.1	9.4	4.7	6.4	8.4	6.2	7.9	9.8	8.0	9.8	
	Connection size	A(mm)	200	200	200	250	250	250	300	300	300	300	350	350
		B(inch)	8	8	8	10	10	10	12	12	12	12	14	14
Cooling water data	Temperature	°C	32 → 37.5											
	Water flow rate	m <sup>3</sup> /h	560	630	700	800	900	1,000	1,100	1,200	1,300	1,400	1,500	
	Pressure drop	mAq	8.0	10.6	13.7	8.4	11.1	14.3	8.8	10.9	13.4	12.3	14.6	
	Connection size	A(mm)	300	300	300	350	350	350	400	400	400	400	400	400
		B(inch)	12	12	12	14	14	14	16	16	16	16	16	16
Fuel (gas)	Cooling	Nm <sup>3</sup> /h	161.7	181.9	202.1	231.0	259.9	288.7	317.6	346.5	375.4	404.2	433.1	
	Heating	Nm <sup>3</sup> /h	161.7	181.9	202.1	231.0	259.9	288.7	317.6	346.5	375.4	404.2	433.1	
Electrical data	Source	V	3ø220/380/440V 50Hz (60Hz)											
	Total current	A	38.1	38.1	38.1	46.2	51.2	51.2	75.9	75.9	75.9	75.9	75.9	75.9
	Wire size	mm <sup>2</sup>	16	16	16	16	25	25	35	35	35	35	35	35
	Power	kVA	25.0	25.0	25.0	30.4	33.7	33.7	50.0	50.0	50.0	50.0	50.0	50.0
	Absorbent pump no.1	kW(A)	6.6 (16.2)	6.6 (16.2)	6.6 (16.2)	5.5 (20.0)	7.5 (25.0)	7.5 (25.0)	7.5 (25.0)	7.5 (25.0)	7.5 (25.0)	7.5 (25.0)	7.5 (25.0)	7.5 (25.0)
	Absorbent pump no.2	kW(A)	2.0 (5.2)	2.0 (5.2)	2.0 (5.2)	2.2 (6.7)	2.2 (6.7)	2.2 (6.7)	5.5 (21.0)	5.5 (21.0)	5.5 (21.0)	5.5 (21.0)	5.5 (21.0)	5.5 (21.0)
	Refrigerant pump	kW(A)	0.4 (1.4)	0.4 (1.4)	0.4 (1.4)	0.4 (1.4)	0.4 (1.4)	0.4 (1.4)	1.5 (3.9)	1.5 (3.9)	1.5 (3.9)	1.5 (3.9)	1.5 (3.9)	1.5 (3.9)
	Purge pump	kW(A)	0.4 (1.45)	0.4 (1.45)	0.4 (1.45)	0.4 (1.45)	0.4 (1.45)	0.4 (1.45)	0.75 (2.5)	0.75 (2.5)	0.75 (2.5)	0.75 (2.5)	0.75 (2.5)	0.75 (2.5)
	Burner blower (gas)	kW(A)	5.5 (13.0)	5.5 (13.0)	5.5 (13.0)	7.5 (15.8)	7.5 (15.8)	7.5 (15.8)	11.0 (22.7)	11.0 (22.7)	11.0 (22.7)	11.0 (22.7)	11.0 (22.7)	11.0 (22.7)
Dimension	Length	mm	5,060	5,600	6,100	5,740	6,240	6,760	6,170	6,690	7,190	6,850	7,350	
	Width	mm	3,080	3,080	3,080	3,400	3,400	3,400	4,180	4,180	4,180	4,590	4,590	
	Height	mm	3,066	3,066	3,066	3,600	3,600	3,600	3,600	3,600	3,600	3,800	3,800	
Rigging	Operating	ton	21.2	22.9	24.7	33.5	36.1	38.9	44.3	47.6	50.6	55.5	58.5	
	Total shipping	ton	14.9	15.9	17.0	23.8	25.6	27.4	31.4	33.6	35.6	38.9	40.7	
Flue connection size	mm	500x350	500x350	500x350	602x400	602x400	602x400	900x400	900x400	900x400	900x400	900x400	900x400	
Clearance for tube removal	mm	4,600	5,200	5,700	5,200	5,700	6,200	5,700	6,200	6,700	6,200	6,700		

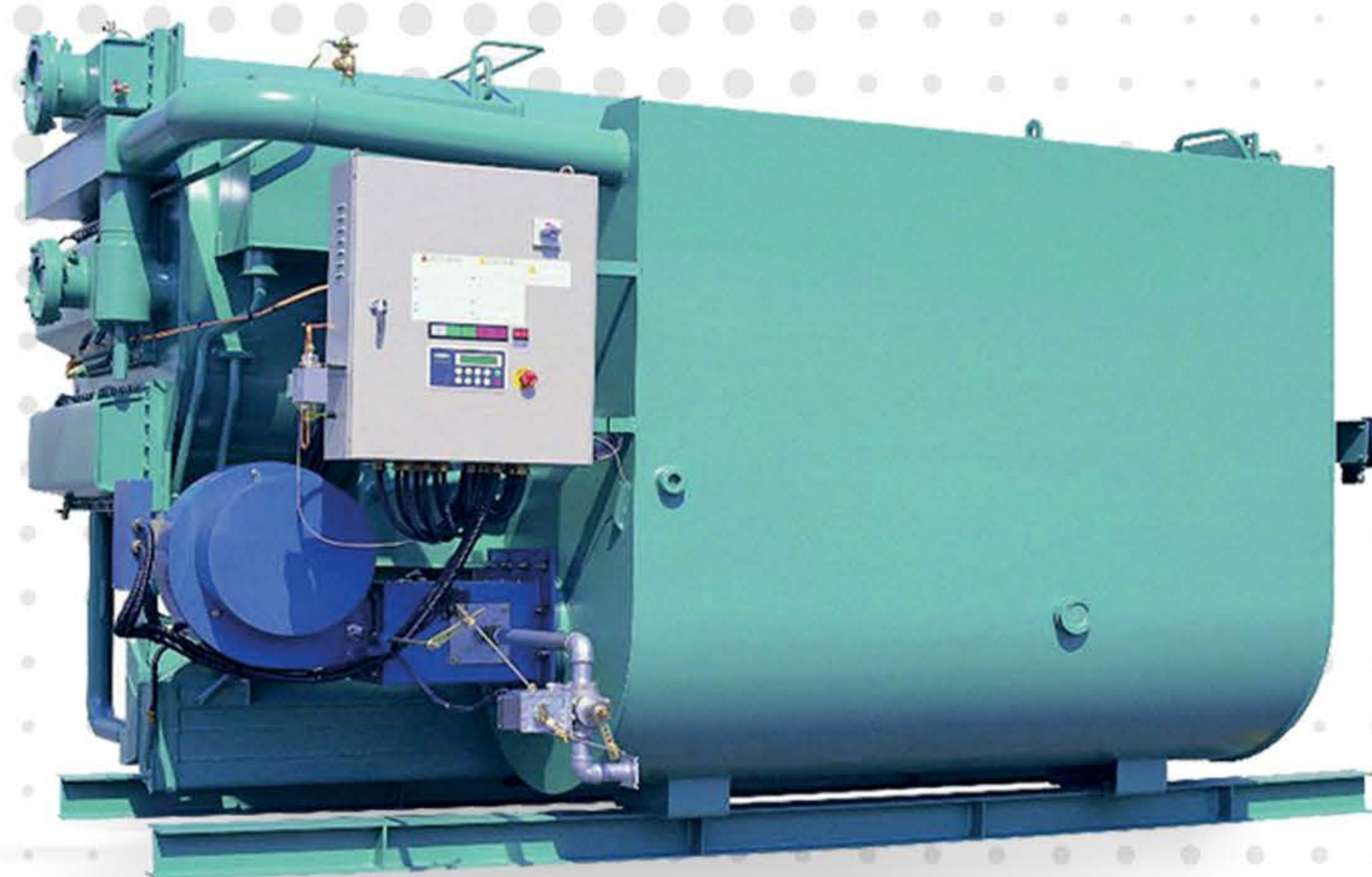
- Note:
- 1.usRT=3,024kcal/h, 1kW= 860kcal/h
  2. Standard Tube and Water Side Pressure(Chiller & Cooling Water Circuit): 10kg/G(981 kPa)
  3. Standard gas prssure:4,000mmAg
  4. Standard low calorific value :9,360 kcal/N
  5. Currents & Electricity Consumptions are based on 3ø 380V 60HZ
  6. Power supply wire size is based on the due of metal conduit and 40°C of ambient temperatue.
  7. The specifications are subject to change without prior notice.
  8. Fouling factor of water side: 0.0001 mhr C/kcal

Direct Fired Absorption Chiller Heater ( A series | COP 1.06 )

Model Name: FTI-SDFA			010	012	015	018	021	024	028	032	036	040	045	050	
Cooling capacity	RT		100	120	150	180	210	240	280	320	360	400	450	500	
	kW		352	422	528	633	739	844	985	1125	1266	1407	1583	1758	
Heating capacity	kcal/h		253,000	303,600	379,500	455,400	531,300	607,200	708,400	809,600	910,800	1,012,000	1,138,500	1,265,000	
	kW		294	353	441	529	617	706	823	941	1059	1176	1323	1470	
Chilled water data	Temperature	°C	12 → 7												
	Water flow rate	m <sup>3</sup> /h	60.5	72.6	90.7	108.9	127.0	145.2	169.3	193.5	217.7	241.9	272.2	302.4	
	Pressure drop	mAq	6.5	6.6	8.0	8.3	7.5	7.9	5.1	5.5	5.8	6.1	5.2	5.5	
	Connection size	A(mm)		100	100	100	100	125	125	150	150	150	150	200	200
		B(inch)		4	4	4	4	5	5	6	6	6	6	8	8
Hot water data	Temperature	°C	55.8 → 60												
	Water flow rate	m <sup>3</sup> /h	60.5	72.6	90.7	108.9	127.0	145.2	169.3	193.5	217.7	241.9	272.2	302.4	
	Pressure drop	mAq	6.5	6.6	8.0	8.3	7.5	7.9	5.1	5.5	5.8	6.1	5.2	5.5	
	Connection size	A(mm)		100	100	100	100	125	125	150	150	150	150	200	200
		B(inch)		4	4	4	4	5	5	6	6	6	6	8	8
Cooling water data	Temperature	°C	32 → 37.5												
	Water flow rate	m <sup>3</sup> /h	100	120	150	180	210	240	280	320	360	400	450	500	
	Pressure drop	mAq	3.9	4.4	6.5	7.7	5.6	6.2	10.9	12.1	8.7	9.4	10.3	11.2	
	Connection size	A(mm)		125	125	125	125	150	150	200	200	200	200	250	250
		B(inch)		5	5	5	5	6	6	8	8	8	8	10	10
Fuel (gas)	Cooling	Nm <sup>3</sup> /h	28.9	34.6	43.3	52.0	60.6	69.3	80.8	92.4	103.9	115.5	129.9	144.4	
	Heating	Nm <sup>3</sup> /h	28.9	34.6	43.3	52.0	60.6	69.3	80.8	92.4	103.9	115.5	129.9	144.4	
Electrical data	Source	V	3ø 220/380/440V 50Hz (60Hz)												
	Total current	A	10.6	10.6	11.6	13.5	13.5	13.5	18.1	18.7	18.7	20.2	21.9	21.9	
	Wire size	mm <sup>2</sup>	4	4	4	4	4	4	4	4	4	6	6	6	
	Power	kVA	7.0	7.0	7.6	8.9	8.9	8.9	11.9	12.3	12.3	13.3	14.4	14.4	
	Absorbent pump no.1	kW(A)	1.5 (5.43)	1.5 (5.43)	2.4(6.4)	2.4(6.4)	2.4(6.4)	2.4(6.4)	3.4(10.3)	3.4(10.3)	3.4(10.3)	3.4(10.3)	3.7(12.0)	3.7(12.0)	
	Absorbent pump no.2	kW(A)	n/a												
	Refrigerant pump	kW(A)	0.2(1.1)	0.2(1.1)	0.2(1.1)	0.2(1.1)	0.2(1.1)	0.2(1.1)	0.4(1.4)	0.4(1.4)	0.4(1.4)	0.4(1.4)	0.4(1.4)	0.4(1.4)	
	Purge pump	kW(A)	0.4(1.45)												
	Burner blower (gas)	kW(A)	0.72(2.1)	0.72(2.1)	0.72(2.1)	1.1(4.0)	1.5(4.0)	1.5(4.0)	1.8(4.4)	2.2(5.0)	2.2(5.0)	3.0(6.5)	3.0(6.5)	3.0(6.5)	
Dimension	Length	mm	2700	2700	3720	3,720	3,740	3,740	4,780	4,780	4,890	4,890	4,870	4,870	
	Width	mm	1,990	1,990	1,990	2,010	2,190	2,210	2,170	2,170	2,310	2,350	2,570	2,570	
	Height	mm	2,030	2,030	2,030	2,030	2,300	2,300	2,300	2,300	2,540	2,540	2,765	2,765	
Rigging	Operating	ton	4.8	5.1	6.1	6.7	7.9	8.2	9.2	9.8	12.3	12.7	15.2	15.6	
	Total shipping	ton	3.2	3.3	4.0	4.3	5.0	6.0	6.2	6.7	8.4	8.6	10.3	10.5	
Flue connection size		mm	280x210	280x210	280x210	280x210	310x310	310x310	310x310	310x310	360x310	360x310	410x310	410x310	
Clearance for tube removal		mm	2,400	2,400	3,400	3,400	3,400	3,400	4,500	4,500	4,500	4,500	4,500	4,500	

Note:

- 1.usRT=3,024kcal/h, 1kW= 860kcal/h
2. Standard Tube and Water Side Pressure(Chiller & Cooling Water Circuit): 10kg/G(981 kPa)
3. Standard gas prssure:4,000mmAg
4. Standard low calorific value :9,360 kcal/N
5. Currents & Electricity Consumptions are based on 3ø 380V 60HZ
6. Power supply wire size is based on the due of metal conduit and 40°C of ambient temperatue.
7. The specifications are subject to change without prior notice.
8. Fouling factor of water side: 0.0001 mhr C/kcal



چیلر شعله مستقیم جریان موازی

Model Name: FTI-PDF

COP = 1.12

## Direct Fired Absorption Chiller Heater ( FTI-PDF | COP 1.12 )

Model Name: FTI-PDF			40	50	60	70	80	90	100
Cooling Capacity	usrt		40	50	60	70	80	90	100
Heating Capacity	kW		128	160	192	224	256	289	321
Chilled Water System	Temperature	°C	Inlet: 12.0°C, Outlet: 7.0°C						
	Flow Rate	m <sup>3</sup> /h	24	30	36	42	48	54	60
	Pressure Drop	bar	0,60	0,65	0,79	0,40	0,44	0,40	0,57
	Connection Size	DN	65	65	65	80	80	100	100
Hot Water System	Temperature	°C	Inlet: 55.4°C, Outlet: 60.0°C						
	Flow Rate	m <sup>3</sup> /h	24	30	36	42	48	54	60
	Pressure Drop	bar	0,60	0,65	0,79	0,40	0,44	0,40	0,57
	Connection Size	DN	65	65	65	80	80	100	100
Cooling Water System	Temperature	°C	Inlet: 32.0°C, Outlet: 37.0°C						
	Flow Rate	m <sup>3</sup> /h	45.6	57	68.4	79.8	91.2	102.6	114
	Pressure Drop	bar	1,15	1,40	1,50	0,83	0,81	0,72	0,90
	Connection Size	DN	100	100	100	100	100	125	125
Ch <sub>4</sub> Gas	Required Gas Pressure	mbar	15-500						
	Consumption Rate On Cooling	kW	148	185	222	260	297	334	371
	Connection Size	DN	25			40			
Air Consumption Rate (25°C)	m <sup>3</sup> /h	181	227	272	318	364	410	455	
Exhaust Gas	Volume (200°C Max)	m <sup>3</sup> /h	295	369	442	514	588	662	735
	Temperature	°C	Approx 200°C						
	Connection Dia	mm	150	175	200	220	220	250	250
Capacity Electrical	KVA	4,9	4,9	4,9	7,5	7,5	7,5	7,5	
Solution Pump	KW	0,75	0,75	0,75	1,1+0,4	1,1+0,4	1,1+0,4	1,1+0,4	
Refrigerant Pump	KW	0,2	0,2	0,2	0,4	0,4	0,4	0,4	
Burner Fan	KW	0,4	0,4	0,4	0,75	0,75	0,75	0,75	
Vacuum Pump	KW	0,4	0,4	0,4	0,4	0,4	0,4	0,4	
Capacity Control	-		Fully Automatic, On-Off Control			Fully Automatic, Proportional Control			
Operating Weight	Ton	3,1	3,2	3,4	4,6	4,7	4,7	4,7	
Rigging Weight	Ton	3.0	3.1	3.3	4.4	4.5	4.5	4.5	
External Dimension	Length (L)	m	2.158	2.158	2.158	2.455	2.455	2.455	2.455
	Width (W)	m	1.592	1.592	1.592	1.775	1.775	1.775	1.775
	Height (H)	m	1.872	1.872	1.892	2.046	2.046	2.046	2.046

## Note:

- 1.usRT=3,024kcal/h, 1kW= 860kcal/h
2. Standard Tube and Water Side Pressure(Chiller & Cooling Water Circuit): 10kg/G(981 kPa)
3. Standard gas prssure:4,000mmAg
4. Standard low calorific value :9,360 kcal/N
5. Currents & Electricity Consumptions are based on 3ø 380V 60HZ
6. Power supply wire size is based on the due of metal conduit and 40°C of ambient temperatue.
7. The specifications are subject to change without prior notice.
8. Fouling factor of water side: 0.0001 mhr C/kcal

## Direct Fired Absorption Chiller Heater ( FTI-PDF | COP 1.12 )

Model Name: FTI-PDF		115	125	140	150	170	200	220	250	270	320	360	
Cooling Capacity	Usrt	115	125	140	150	170	200	220	250	270	320	360	
Heating Capacity	Kw	404	439	492	527	598	703	773	879	949	1.125	1.266	
Chilled Water System	Temperature	°C Inlet: 12.0 °C, Outlet: 7.0°C											
	Flow Rate	M <sup>3</sup> /H	69.6	75.6	84.7	90.8	102.8	121.0	133.1	151.2	163.3	193.5	217.7
	Pressure Drop	Bar	0.44	0.52	0.54	0.61	0.79	1.09	0.55	0.72	0.36	0.50	0.76
	Connection Size	Dn	100	100	100	100	100	125	125	125	125	150	150
Hot Water System	Temperature	°C Inlet: 55.0 °C, Outlet: 60.0°C											
	Flow Rate	M <sup>3</sup> /H	69.6	75.6	84.7	90.8	102.8	121.0	133.1	151.2	163.3	193.5	217.7
	Pressure Drop	Bar	0.44	0.52	0.54	0.61	0.79	1.09	0.55	0.72	0.36	0.50	0.76
	Connection Size	Dn	100	100	100	100	100	125	125	125	125	150	150
Cooling Water System	Temperature	°C Inlet: 32.0 °C, Outlet: 37.4°C											
	Flow Rate	M <sup>3</sup> /H	119.6	130.0	145.6	156.0	176.8	208.0	228.8	260.0	280.8	333.0	374.4
	Pressure Drop	Bar	0.68	0.80	0.57	0.67	0.40	0.55	0.88	1.13	0.68	0.96	1.39
	Connection Size	Dn	125	125	125	125	125	150	150	150	150	200	200
Ch <sub>4</sub> Gas	Required Gas Pressure	Mbar	17-500					50-500					
	Consumption Rate On Cooling	Kw	400	435	487	522	591	696	765	868	939	1.113	1.252
	Connection Size	Dn	50			65		40	50				
Air Consumption Rate (25°C)		M <sup>3</sup> /H	554	602	674	722	818	963	1.060	1.204	1.300	1.541	1.734
Exhaust Gas	Volume (200°C Max)	M <sup>3</sup> /H	831	904	1.011	1.083	1.228	1.445	1.589	1.806	1.950	2.311	2.600
Temperature °C		Approx 200°C											
	Connection Dia	Mm	260	270	280	290	310	330	350	370	390	410	430
Capacity Electrical		Kva	12.7	12.7	12.7	12.7	12.7	12.7	14.0	14.0	14.0	16.4	16.4
Solution Pump		Kw	3.7	3.7	3.7	3.7	3.7	3.7	4.5	4.5	4.5	4.5	4.5
Refrigerant Pump		Kw	0.4	0.4	0.4	0.4	0.4	0.4	0.8	0.8	0.8	0.8	0.8
Burner Fan		Kw	1.5	1.5	1.5	1.5	1.5	2.2	2.2	2.2	2.2	3.7	3.7
Vacume Pump		Kw	0.4	0.4	0.4	0.4	0.4	0.4	0.4	0.4	0.4	0.4	0.4
Capacity Control		-	Fully Automatic, Proportional Control										
Operating Weight		Ton	7.5	7.5	7.8	7.8	8.6	8.6	11.7	12.0	12.1	12.2	13.5
Rigging Weight		Ton	7.0	7.0	7.3	7.3	8.1	8.1	11.0	11.3	11.4	11.5	12.8
External Dimension	Length (L)	M	3.687	3.687	3.840	3.840	4.101	4.101	4.280	4.280	4.280	4.406	5.052
	Width (W)	M	1.852	1.852	1.852	1.852	1.852	1.852	2.462	2.462	2.462	2.685	
	Height (H)	M	2.065	2.065	2.065	2.065	2.065	2.065	2.534	2.534	2.534	2.534	2.535

## Note:

- 1.usRT=3,024kcal/h, 1kW= 860kcal/h
2. Standard Tube and Water Side Pressure(Chiller & Cooling Water Circuit): 10kg/G(981 kPa)
3. Standard gas prssure:4,000mmAg
4. Standard low calorific value :9,360 kcal/N
5. Currents & Electricity Consumptions are based on 3ø 380V 60HZ
6. Power supply wire size is based on the due of metal conduit and 40°C of ambient temperatue.
7. The specifications are subject to change without prior notice.
8. Fouling factor of water side: 0.0001 mhr C/kcal

## Direct Fired Absorption Chiller Heater ( FTI-PDF | COP 1.12 )

Model Name: FTI-PDF			400	450	500	550	600	700	800	900	1000	1250	1500	
Cooling Capacity		Usrt	400	450	500	550	600	700	800	900	1000	1250	1500	
Heating Capacity		Kw	1406	1582	1758	1934	2110	2461	2813	3165	3516	4395	5275	
Chilled Water System	Temperature	°C	Inlet: 12.0 °C, Outlet: 7.0°C											
	Flow Rate	M <sup>3</sup> /H	241.9	272.2	302.4	332.7	362.9	423.4	483.8	544.3	604.8	756.0	907.2	
	Pressure Drop	Bar	0.94	0.43	0.53	0.75	0.89	0.74	0.76	0.79	0.83	1.19	1.88	
	Connection Size	Dn	150	200	200	200	200	250	250	250	300	300	350	
Hot Water System	Temperature	°C	Inlet: 55.0 °C, Outlet: 60.0°C											
	Flow Rate	M <sup>3</sup> /H	241.9	272.2	302.4	332.7	362.9	423.4	483.8	544.3	604.8	756.0	907.2	
	Pressure Drop	Bar	0.94	0.43	0.53	0.75	0.89	0.74	0.76	0.79	0.83	1.19	1.88	
	Connection Size	Dn	150	200	200	200	200	250	250	250	300	300	350	
Cooling Water System	Temperature	°C	Inlet: 32.0 °C, Outlet: 37.4°C											
	Flow Rate	M <sup>3</sup> /H	416.0	468.0	520	572.0	624.0	728	832.0	936.0	1040	1300	1560	
	Pressure Drop	Bar	1.62	0.72	0.078	0.88	0.96	0.80	0.85	1.30	0.53	1.12	0.78	
	Connection Size	Dn	200	250	250	300	300	300	350	350	350	400	400	
Ch <sub>4</sub> Gas	Required Gas Pressure	Mbar	50.500									200-500		
	Consumption Cooling	Kw	1392	1566	1739	1913	2087	2435	2783	3131	3479	4349	5219	
	Connection Size	Dn	65			80						100		
Air Consumption Rate (25°C)		M <sup>3</sup> /H	1926	2167	2408	2649	2890	3371	3852	4330	4815	6020	7220	
Exhaust Gas	Volume (200°C Max)	M <sup>3</sup> /H	2890	3250	3612	3973	4334	5057	5780	6500	7220	9030	10830	
	Temperature	°C	Approx 200°C											
	Connection Dia	Mm	450	480	500	530	550	600	640	680	710	580 X 2	620 X 2	
Capacity Electrical		Kva	16.4	24.8	27.3	27.3	27.3	31.1	42.0	45.0	50	64.0	67.4	
Solution Pump		Kw	4.5	4.5	5.5	5.5	5.5	7.5	5.5+3.7	7.5+3.7	7.5+3.7	7.5+3.7	7.5+5.5	
Refrigerant Pump		Kw	0.8	1.5	1.5	1.5	1.5	1.5	1.5	1.5	1.5	1.5	1.5	
Burner Fan		Kw	3.7	3.7	5.5	5.5	5.5	5.5	7.5	7.5	11	5.5 X 2	7.5 X 2	
Vacume Pump		Kw	0.4	0.4	0.4	0.4	0.4	0.4	0.4	0.4	0.4	0.4	0.4	
Capacity Control		-	Fully Automatic, Proportional Control											
Operating Weight		Ton	14.7	17.1	19.1	23	24.5	29.0	36.0	40.0	43.0	62.0	79.0	
Rigging Weight		Ton	14.0	15.6	17.6	21.0	22.5	27.0	32.0	37.5	40.5	58.0	75.0	
External Dimension	Length(L)	M	5.052	6.149	6.149	7.256	7.256	7.075	7.144	8.521	8.521	9.623	9.623	
	Width (W)	M	2.685	2.765	2.765	2.84	2.84	3.255	3.355	3.920	3.920	3.830	3.830	
	Height (H)	M	2.535	2.580	2.580	2.655	2.655	2.866	2.889	3.300	3.300	3.340	3.340	

## Note:

- 1.usRT=3,024kcal/h, 1kW= 860kcal/h
2. Standard Tube and Water Side Pressure(Chiller & Cooling Water Circuit): 10kg/G(981 kPa)
3. Standard gas prssure:4,000mmAg
4. Standard low calorific value :9,360 kcal/N
5. Currents & Electricity Consumptions are based on 3ø 380V 60HZ
6. Power supply wire size is based on the due of metal conduit and 40°C of ambient temperatue.
7. The specifications are subject to change without prior notice.
8. Fouling factor of water side: 0.0001 mhr C/kcal



چیلر جذبی اگزاست فایر

Model Name: FTI-CHP

COP = 1.2



## Exhaust Fired Absorption Chiller Heater ( FTI-CHP | COP 1.2 )

Model Name: FTI-CHP		005	006	007	008	010	012	015	018	021	024	028	032	036	040			
Cooling Capacity	usRT	50	60	70	80	100	120	150	180	210	240	280	320	360	400			
	kW	176	211	246	281	351	422	527	633	738	844	984	1125	1,265	1,406			
Chilled Water	Inlet/Outlet Temp.	°C 12 / 7																
	Flow rate	m <sup>3</sup> /h	30.2	36.3	42.3	48.4	60.5	72.6	90.7	109	127	145	169	194	218	242		
	Pressure Drop	mH <sub>2</sub> O	4.0	3.7	6.2	5.6	4.8	5.1	6.6	7.0	6.4	6.3	4.6	4.5	5.0	5.1		
	Connection	mm	80				100				125			150				
Cooling Water	Inlet/Outlet Temp.	°C 32 / 37.5																
	Flow rate	m <sup>3</sup> /h	50	60	70	80	100	120	150	180	210	240	280	320	360	400		
	Pressure Drop	mH <sub>2</sub> O	7.0	6.1	10.2	9.6	11.1	11.3	11.5	11.8	11.8	12.1	11.2	10.7	11.1	10.8		
	Connection	mm	100				125			150				200				
Heating Capacity	Mcal/h	142	170	198	227	283	340	425	510	595	680	793	906	1,019	1,133			
	kW	165	197	230	263	329	395	494	592	691	790	922	1,053	1,185	1,317			
Hot Water	Inlet/Outlet Temp.	°C 55.3 / 60																
	Flow rate	ton/h	30	36	42	48	60.5	72.6	90.7	109	127	145	169	194	218	242		
	Pressure Drop	mH <sub>2</sub> O	4.0	3.7	6.2	5.6	4.8	5.1	6.6	7.0	6.4	6.3	4.6	4.5	5.0	5.1		
	Connection	mm	80				100				125			150				
Exhaust Gas	Flow rate	kg/sec	0.439	0.527	0.615	0.703	0.88	1.05	1.32	1.58	1.84	2.11	2.46	2.81	3.16	3.51		
	Temp.	Cooling	°C 450 / 165															
		Heating	°C 450 / 125															
	Pressure Drop	mmH <sub>2</sub> O	58	58	74	71	77	82	79	92	97	113	129	131	123	131		
	Inlet Connection	mm × mm	782×291	782×330	782×369	782×408	922×408	922×486	922×603	922×642	922×681	922×681	922×798	922×876	1376×720	1376×759		
	Outlet Conn	mm	300				400				500				600			
	Diverter Valve	mm	300				400				500				600			
Electric	Power source	kW	3PH, 400V, 50Hz															
	Abs. Pump	kW [A]	1.5 (5.5)				2.0 (6.4)				2.4 (6.9)				3.2 (9.0)			
	Ref. Pump	kW [A]	0.2 (1.0)				0.3 (1.2)				0.4 (1.4)							
	Purge Pump	kW [A]	0.4 (1.4)															
	Sealing Blower	kW [A]	0.4 (2.5)															
	Control Panel	kW [A]	0.2 (0.5)															
	Amp.(400Vac)	A	10.8				11.9				12.6				14.7			
Size	Length (L)	mm	2,100		2,600		2,638		3,680		3,717		4,742		4,872			
	Width (W)	mm	1,683	1,722	1,761	1,800	1,857	1,935	2,052	2,091	2,194	2,194	2,310	2,349	2,349	2,349		
	Height (H)	mm	1800				2,090				2,147				2,399			
Weight	Rigging	ton	3.0	3.2	3.7	3.9	5.0	5.3	6.4	6.8	7.9	8.5	9.8	10.3	12.8	13.2		
	Operation	ton	3.2	3.5	4.0	4.3	5.4	5.8	7.0	7.4	8.6	9.3	10.7	11.3	14.0	14.6		

## Note:

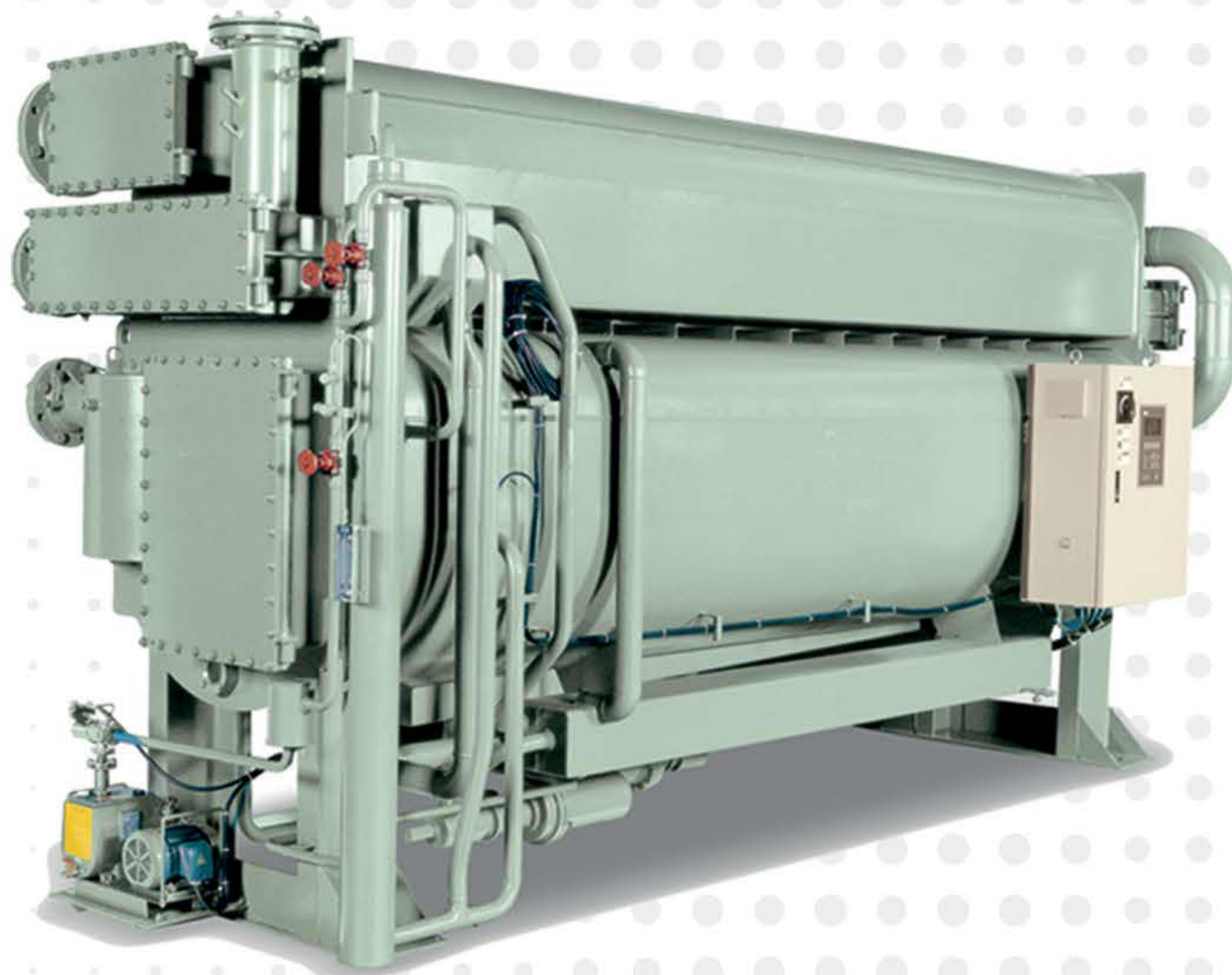
- Working pressure of each water side is based on 1.0MPa (150psig)
- Fouling factor 0.0001 m<sup>2</sup>.hr.°C/Kcal for Absorber, Condenser and Evaporator.
- Min. outlet temp. of chilled water: 5°C
- Min. allowable inlet temp. of cooling water: 20°C.
- Controllable range shall be 0~100%.
- Standard Power source is 3ph, 400V, 50Hz and available 220, 380, 440V and 460V power source.
- Each water flow can be adjusted within 50~120%.

## Exhaust Fired Absorption Chiller Heater ( FTI-CHP | COP 1.2 )

Model Name: FTI-CHP			045	050	056	063	070	080	090	100	110	120	130	140	150
Cooling Capacity		usRT	450	500	560	630	700	800	900	1,000	1,100	1,200	1,300	1,400	1,500
		kW	1,582	1,757	1,968	2,214	2,460	2,812	3,163	3,515	3,866	4,218	4,569	4,921	5,272
Chilled Water	Inlet/Outlet Temp.	°C	12 / 7												
	Flow rate	m <sup>3</sup> /h	272	302	339	381	423	484	544	605	665	726	786	847	907
	Pressure Drop	mH <sub>2</sub> O	4.4	3.9	3.6	5.0	6.6	4.7	6.4	8.5	7.2	9.2	11.5	8.3	10.2
	Connection	mm	200				250				300				350
Cooling Water	Inlet/Outlet Temp.	°C	32 / 37.5												
	Flow rate	m <sup>3</sup> /h	450	500	560	630	700	800	900	1,000	1,100	1,200	1,300	1,400	1,500
	Pressure Drop	mH <sub>2</sub> O	10.7	10.8	7.7	10.6	14.0	8.7	11.8	15.6	3.0	3.8	4.8	4.0	4.8
	Connection	mm	250			300			350			400			
Heating Capacity		Mcal/h	1,274	1,416	1,586	1,784	1,982	2,266	2,549	2,832	3,115	3,398	3,682	3,965	4,248
		kW	1,481	1,646	1,843	2,074	2,304	2,633	2,962	3,291	3,621	3,950	4,279	4,608	4,937
Hot Water	Inlet/Outlet Temp.	°C	55.3 / 60												
	Flow rate	ton/h	272	302	339	381	423	484	544	605	665	726	786	847	907
	Pressure Drop	mH <sub>2</sub> O	4.4	3.9	3.6	5.0	6.6	4.7	6.4	8.5	7.2	9.2	11.5	8.3	10.2
	Connection	mm	200				250				300				350
Exhaust Gas	Flow rate	kg/sec	3.95	4.39	4.92	5.53	6.15	7.03	7.91	8.78	9.66	10.54	11.42	12.30	13.18
	Temp.	Cooling	°C 450 / 165												
		Heating	°C 450 / 125												
	Pressure Drop	mmH <sub>2</sub> O	133	134	143	133	146	155	153	176	213	221	212	206	184
	Inlet Connection	mm × mm	1376×837	1376×915	1376×1008	1376×1143	1376×1233	1376×1218	1376×1368	1376×1418	1376×1418	1376×1518	1376×1668	1376×1818	1376×2068
	Outlet Conn	mm	600				750				1000				
Diverter Valve	mm	600				750				1000					
Electric	Power source	kW	3PH, 400V, 50Hz												
	Abs. Pump	kW [A]	3.2 (9.0)			5.5 (15.0)				7.5 (24.0)					
	Ref. Pump	kW [A]	0.3 (1.2)				1.5 (4.0)								
	Purge Pump	kW [A]	0.4 (1.4)				0.75 (2.2)								
	Sealing Blower	kW [A]	0.4 (2.5)												
	Control Panel	kW [A]	0.2 (0.5)												
	Total Ampere @400V	A	14.7			20.7			23.3			33.1			
Size	Length (L)	mm	4,954		4,998	5,540	6,038	5,644	6,142	6,667	6,293	6,818	7,318	6,974	7,475
	Width (W)	mm	2,491	2,569	2,934	3,069	3,159	3,330	3,480	3,530	4,348	4,448	4,598	4,932	5,182
	Height (H)	mm	2,633		2,962			3,380			3,500			3,700	
Weight	Rigging	ton	15.7	16.5	21.2	23.1	24.6	31.0	33.6	35.6	41.1	43.4	46.4	50.2	54.1
	Operation	ton	17.2	18.1	23.7	25.8	27.5	34.8	37.6	39.9	46.2	48.8	52.1	56.5	60.8

## Note:

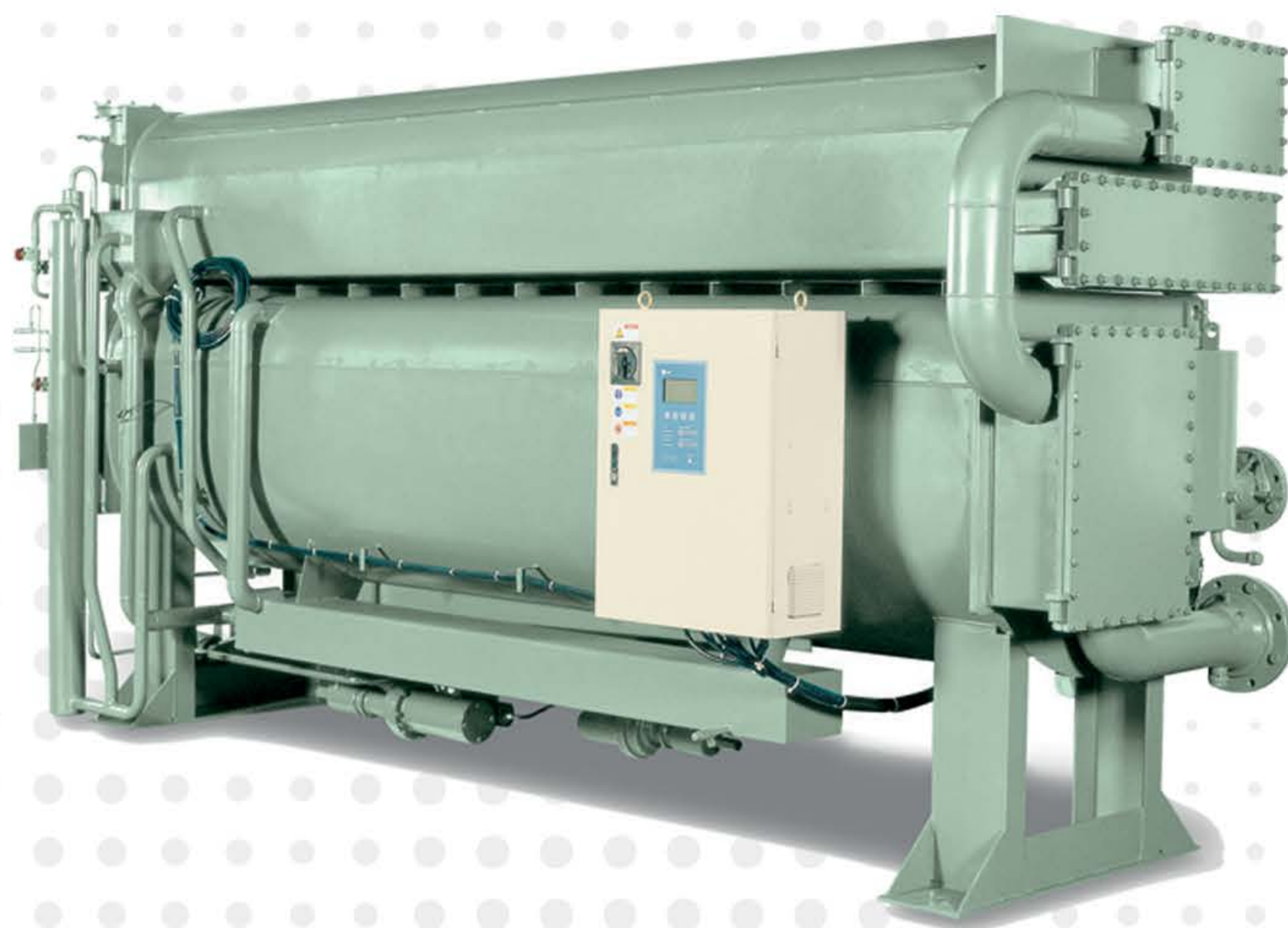
- Working pressure of each water side is based on 1.0MPa (150psig)
- Fouling factor 0.0001 m<sup>2</sup>.hr.°C/Kcal for Absorber, Condenser and Evaporator.
- Min. outlet temp. of chilled water: 5°C
- Min. allowable inlet temp. of cooling water: 20°C.
- Controllable range shall be 0~100%.
- Standard Power source is 3ph, 400V, 50Hz and available 220, 380, 440V and 460V power source.
- Each water flow can be adjusted within 50~120%.



چیلر جذبی تک اثره آبگرم

Model Name: FTI-HW

COP = 0.825



چیلر جذبی تک اثره بخار

Model Name: FTI-ST

COP = 0.8

## Hot Water Absorption Chiller ( FTI-HW | COP 0.825 )

Model Name: FTI-HW			30		40		50		70		80		100		120	
Nominal Cooling Capacity		USRT	28	30	38	40	47	50	61	65	75	80	94	100	113	120
Chilled Water Temp		°C	12-7	13-8	12-7	13-8	12-7	13-8	12-7	13-8	12-7	13-8	12-7	13-8	12-7	13-8
Chilled Water Data	Flow Rate	m <sup>3</sup> /h	17.1	18.1	22.8	24.2	28.5	30.2	37.0	39.3	45.6	48.4	57.0	60.5	68.3	72.6
	Pressure Drop	mAq	2.2	2.5	2.9	3.3	5.3	6.0	6.5	7.3	6.7	7.6	5.8	6.5	5.8	6.5
	Connection Size	B(inch)	21/2				3				4					
Cooling Water Data	Water in/out Temp	°C	31 _ 36.5													
	Flow Rate	m <sup>3</sup> /h	37.4	39.4	49.8	52.5	62.3	65.7	81.0	85.4	99.7	105.1	124.6	131.3	149.5	157.6
	Pressure Drop	mAq	2.5	2.8	3.6	44.0	6.3	7.0	2.3	2.6	2.8	3.1	4.3	4.8	5.1	5.7
	Connection Size	B(inch)	3				5									
Hot Water Data	Water in/out Temp	°C	95 _ 80													
	Flow Rate	m <sup>3</sup> /h	8.0	8.4	10.7	11.2	13.4	14.0	17.4	18.2	21.4	22.4	26.7	28.0	32.0	33.6
	Pressure Drop	mAq	1.1	1.2	1.2	1.3	2.6	2.9	0.8	0.9	0.9	1.0	2.1	2.3	2.2	2.4
	Connection Size	B(inch)	11/2				21/2				3					
	Connection Size of control Valve	B(inch)	11/2				2		21/2				3			
Electrical Data	Phase/Volts/Hz	-	3 $\phi$ , 220V/380V/440V, 50Hz/60Hz													
	Total current	A	6.7				9.4									
	Wire Size	mm <sup>2</sup>	3.5													
	Electric consumption	kVA	4.4				6.2									
	Absorbent pump No.1	kW(A)	1.2(4.1)				2.0(6.8)									
	Absorbent pump No.2	kW(A)	*****													
	Refrigerant pump	kW(A)	0.2(1.13)				0.2(1.13)									
	Purge pump	kW(A)	0.4(1.0)													
Dimension	Length(L)	mm	2,020				2,520		2,547				3,567			
	Depth(W)	mm	1,344		1,346				1,305							
	Height(H)	mm	1,952		1,965				2,150							
Weight	Operating Weight	Ton	2.1		2.3		2.7		4.1		4.3		5.3		5.7	
	Rigging	Ton	1.8		1.9		2.3		3.5		3.7		4.6		4.9	
Tube Removal Space		mm	2,000				2,400				3,400					

## Note:

- Working pressure of each water side is based on 1.0MPa (150psig)
- Fouling factor 0.0001 m<sup>2</sup>.hr. °C/Kcal for Absorber, Condenser and Evaporator.
- Min. outlet temp. of chilled water: 5°C
- Min. allowable inlet temp. of cooling water: 20°C.
- Controllable range shall be 0~100%.
- Standard Power source is 3ph, 400V, 50Hz and available 220, 380, 440V and 460V power source.
- Each water flow can be adjusted within 50~120%.

## Hot Water Absorption Chiller ( FTI-HW | COP 0.825 )

Model Name: FTI-HW		140		160		190		210		240		270		310		
Nominal Cooling Capacity		USRT	132	140	151	160	179	190	198	210	226	240	254	270	292	310
Chilled Water Temp		°C	12-7	13-8	12-7	13-8	12-7	13-8	12-7	13-8	12-7	13-8	12-7	13-8	12-7	13-8
Chilled Water Data	Flow Rate	m <sup>3</sup> /h	79.7	84.7	91.1	96.8	108.2	114.9	119.6	127.0	136.7	145.2	153.8	163.3	176.6	187.5
	Pressure Drop	mAq	6.0	6.8	6.4	7.2	5.9	6.6	5.8	6.5	5.9	6.7	5.7	6.4	6.6	7.4
	Connection Size	B(inch)	4			5			6							
Cooling Water Data	Water in/out Temp	°C	31 __ 36.5													
	Flow Rate	m <sup>3</sup> /h	174.4	183.9	199.4	210.2	236.8	249.6	261.7	275.8	299.1	315.2	336.4	354.4	386.3	407.2
	Pressure Drop	mAq	3.6	4.0	4.1	44.6	7.3	8.1	7.8	8.7	5.7	6.3	6.3	7.0	7.2	8.0
	Connection Size	B(inch)	6			8						10				
Hot Water Data	Water in/out Temp	°C	95_80													
	Flow Rate	m <sup>3</sup> /h	37.4	39.2	42.7	44.8	50.7	53.2	56.1	58.8	64.1	67.2	72.1	75.6	82.8	86.8
	Pressure Drop	mAq	2.2	2.4	2.4	2.6	4.4	4.8	4.3	4.7	4.4	4.8	4.4	4.8	4.4	4.8
	Connection size	B(inch)	3			4						5				
	Connection Size of control Valve	B(inch)	3			4						5				
Electrical Data	Phase/Volts/Hz	-	3ø, 220V/380V/440V, 50Hz/60Hz													
	Total Current	A	9.4			9.7			8.9							
	Wire Size	mm <sup>2</sup>	3.5													
	Electric consumption	kVA	6.2			6.4			5.9							
	Absorbent pump No.1	kW(A)	2.0(6.8)						2.2(6.0)						2.0(6.0)	
	Absorbent pump No.2	kW(A)	*****													
	Refrigerant pump	kW(A)	0.2(1.13)			0.4(1.42)										
	Purge pump	kW(A)	0.4(1.0)													
Dimension	Length(L)	mm	3,627			4,630			4,784			4,789				
	Depth(W)	mm	1,476						1,539			1,652				
	Height(H)	mm	2,330						2,630			2,886				
Weight	Operating Weight	Ton	6.9	7.2	8.4	8.9	10.8	11.3	13.4							
	Rigging	Ton	5.8	6.1	7.1	7.5	9.1	9.5	11.2							
Tube Removal Space	mm	3,400			4,500											

## Note:

- Working pressure of each water side is based on 1.0MPa (150psig)
- Fouling factor 0.0001 m<sup>2</sup>.hr.°C/Kcal for Absorber, Condenser and Evaporator.
- Min. outlet temp. of chilled water: 5°C
- Min. allowable inlet temp. of cooling water: 20°C.
- Controllable range shall be 0~100%.
- Standard Power source is 3ph, 400V, 50Hz and available 220, 380, 440V and 460V power source.
- Each water flow can be adjusted within 50~120%.

## Hot Water Absorption Chiller ( FTI-HW | COP 0.825 )

Model Name: FTI-HW		340		380		430		480		540		600		670		
Nominal Cooling Capacity	USRT	320	340	358	380	405	430	452	480	509	540	565	600	631	670	
Chilled Water Temp	°C	12-7	13-8	12-7	13-8	12-7	13-8	12-7	13-8	12-7	13-8	12-7	13-8	12-7	13-8	
Chilled Water Data	Flow Rate	m <sup>3</sup> /h	193.7	205.6	216.4	229.8	244.9	260.1	273.4	290.3	307.6	326.6	341.7	362.9	381.6	405.2
	Pressure Drop	mAq	6.4	7.2	5.8	6.5	8.1	9.1	10.8	12.2	6.0	6.8	8.0	9.0	10.6	11.9
	Connection size	B(inch)	6				8									
Cooling Water Data	Water in/out temp	°C	31 ~ 36.5													
	Flow Rate	m <sup>3</sup> /h	423.7	446.6	473.5	499.1	535.8	564.8	598.1	630.5	672.9	709.3	747.6	788.1	834.9	880.0
	Pressure Drop	mAq	7.7	8.6	5.8	6.4	7.8	8.7	10.2	11.3	5.9	6.6	7.7	8.5	10.0	11.1
	Connection size	B(inch)	10		12				14							
Hot Water Data	Water in/out temp	°C	95 ~ 80													
	Flow Rate	m <sup>3</sup> /h	90.8	95.2	101.5	106.4	114.8	120.4	128.2	134.4	144.2	151.2	160.2	168.0	178.9	187.6
	Pressure Drop	mAq	4.4	4.8	2.0	2.2	2.7	3.0	3.6	4.0	2.5	2.8	3.4	3.7	4.5	4.9
	Connection size	B(inch)	5		6				8							
	Connection size of control Valve	B(inch)	5				6									
Electrical Data	Phase/Volts/Hz	-	3 $\phi$ , 220V/380V/440V, 50Hz/60Hz													
	Total current	A	8.9		20.9				19.9				25.7			
	Wire size	mm <sup>2</sup>	3.5		5.5								8.0			
	Electric consumption	kVA	5.9		13.8				13.1				16.9			
	Absorbent pump No.1	kW(A)	2.0(6.0)		3.0(11.2)								4.5(17.0)			
	Absorbent pump No.2	kW(A)	*****		2.0(6.8)				2.2(5.8)							
	Refrigerant pump	kW(A)	0.4(1.42)													
	Purge pump	kW(A)	0.4(1.0)													
Dimension	Length(L)	mm	4,789		4,931		5,473		5,971		5,616		6,114		6,639	
	Depth(W)	mm	1,652		2,015								2,195			
	Height(H)	mm	2,886		3,260								3,680			
Weight	Operating Weight	Ton	14.0		19.3		20.9		22.0		27.5		29.5		31.7	
	Rigging	Ton	11.7		16.2		17.6		18.5		22.7		24.4		26.3	
Tube Removal Space	mm	4,500		4,600		5,200		5,700		5,200		5,700		6,200		

## Note:

- Working pressure of each water side is based on 1.0MPa (150psig)
- Fouling factor 0.0001 m<sup>2</sup>.hr.°C/Kcal for Absorber, Condenser and Evaporator.
- Min. outlet temp. of chilled water: 5°C
- Min. allowable inlet temp. of cooling water: 20°C.
- Controllable range shall be 0~100%.
- Standard Power source is 3ph, 400V, 50Hz and available 220, 380, 440V and 460V power source.
- Each water flow can be adjusted within 50~120%.

## Hot Water Absorption Chiller ( FTI-HW | COP 0.825 )

Model Name: FTI-HW			740		810		880		950		1020		
Nominal Cooling Capacity		USRT	697	740	763	810	829	880	895	950	961	1,020	
Cooling Capacity		°C	12-7	13-8	12-7	13-8	12-7	13-8	12-7	13-8	12-7	13-8	
Chilled Water Data	Flow Rate	m <sup>3</sup> /h	421.5	447.6	461.4	489.9	501.2	532.2	541.1	574.6	581.0	616.9	
	Pressure Drop	mAq	7.9	8.9	10.1	11.4	12.5	14.1	10.2	11.5	12.7	14.3	
	Connection size	B(inch)	10						12				
Cooling Water Data	Water in/out temp	°C	31 _ 36.5										
	Flow Rate	m <sup>3</sup> /h	922.1	972.0	1.009	1.064	1.097	1.156	1.184	1.248	1.271	1.340	
	Pressure Drop	mAq	6.2	6.9	7.7	8.6	9.5	10.6	8.8	9.8	10.4	11.6	
	Connection size	B(inch)	16										
Hot Water Data	Water in/out temp	°C	95_ 80										
	Flow Rate	m <sup>3</sup> /h	197.6	207.2	216.3	226.8	235.0	246.4	253.7	266.0	272.4	285.6	
	Pressure Drop	mAq	1.3	1.4	1.6	1.8	2.0	2.2	1.7	1.9	2.0	2.2	
	Connection Size	B(inch)	8										
	Connection Size of control Valve	B(inch)	8										
Electrical Data	Phase/Volts/Hz	-	3ø, 220V/380V/440V, 50Hz/60Hz										
	Total Current	A	38.0										
	Wire Size	mm <sup>2</sup>	14.0										
	Electric Consumption	KvA	25.0										
	Absorbent pump No.1	kW(A)	4.5(17.0)										
	Absorbent pump No.2	kW(A)	5.5(14.5)										
	Refrigerant pump	kW(A)	1.5(4.0)										
	Purge pump	kW(A)	0.75(2.0)										
Dimension	Length(L)	mm	6,346	6,871	7,371	7,050	7,550						
	Depth(W)	mm	2,680						2,970				
	Height(H)	mm	3,920						4,040				
Weight	Operating Weight	Ton	35.7	38.2	40.5	45.0	47.4						
	Rigging	Ton	30.1	32.3	34.2	37.8	39.8						
Tube Removal Space		mm	5,800	6,300	6,800	6,500	7,000						

## Note:

1. Working pressure of each water side is based on 1.0MPa (150psig)
2. Fouling factor 0.0001 m<sup>2</sup>.hr.°C/Kcal for Absorber, Condenser and Evaporator.
3. Min. outlet temp. of chilled water: 5°C
4. Min. allowable inlet temp. of cooling water: 20°C.
5. Controllable range shall be 0~100%.
6. Standard Power source is 3ph, 400V, 50Hz and available 220, 380, 440V and 460V power source.
7. Each water flow can be adjusted within 50~120%.

## Steam Fired Absorption Chiller ( FTI-ST | COP 0.8 )

Model Name: FTI-ST			100	120	150	180	210	240	280	320	360	400	450		
Nominal Cooling Capacity		USRT	100	120	150	180	210	240	280	320	360	400	450		
Chilled Water Data	Inlet Outlet	°C	12 _ 7												
	Flow Rate	m <sup>3</sup> /h	60.5	72.6	90.7	109	127	145	169	194	218	242	272		
	Pressure Drop	mAq	2.2	2.5	2.9	3.4	3.1	3.3	4.9	4.7	4.6	4.9	4.6		
	Connection	B(inch)	4				5			6			8		
Cooling Water Data	Inlet Outlet	°C	32 _ 39.5												
	Flow Rate	m <sup>3</sup> /h	100	120	150	180	210	240	280	320	360	400	450		
	Pressure Drop	mAq	3.6	3.7	4.8	5.3	4.7	5.1	7.3	6.0	6.3	6.7	5.9		
	Connection	B(inch)	5				6			8			10		
Electrical Data	Phase/Volts/Hz		3 $\phi$ , 220V/380V/440V, 50Hz/60Hz												
	Motor Power	Absorbent Pump	kW	2.0(6.8A)						3.0(9.5A)					
		Refrigerant Pump	kW	0.3(1.16A)				0.4(1.42A)							
		Purge Pump	kW	0.4(1.6A)											
	Control Circuit		kVA(A)	0.3(0.5A)											
	Total Current		A	10.1				10.3			13.0				
	Wire		mm <sup>3</sup>	3.5											
	Power		kVA	6.6				6.8			8.6				
Dimension	Length(L)	mm	2,630		3,650		3,730		4,340		4,440				
	Width(W)	mm	1,490						1,680			1,910			
	Height(H)	mm	2,180				2,410			2,750			3,970		
Weight	Operating	Ton	4.1	4.3	5.5	5.8	6.8	7.1	8.0	9.8	10.2	10.6	12.1		
	Rigging	Ton	3.7	3.9	5.0	5.2	6.0	6.3	7.0	8.5	8.9	9.2	10.5		
	Consumption	kg/h	800	960	1,200	1,440	1,680	1,920	2,240	2,560	2,880	3,200	3,600		
Steam	Steam Inlet Connection	B(inch)	5				6			8					
	Drain Outlet Connection	B(inch)	11/2						2			21/2			
Tube Removal Space		mm	2,400				3,400			4,100					

## Note:

- Working pressure of each water side is based on 1.0MPa (150psig)
- Fouling factor 0.0001 m<sup>2</sup>.hr.°C/Kcal for Absorber, Condenser and Evaporator.
- Min. outlet temp. of chilled water: 5°C
- Min. allowable inlet temp. of cooling water: 20°C.
- Controllable range shall be 0~100%.
- Standard Power source is 3ph, 400V, 50Hz and available 220, 380, 440V and 460V power source.
- Each water flow can be adjusted within 50~120%.



## Steam Fired Absorption Chiller ( FTI-ST | COP 0.8 )

Model Name: FTI-ST			500	550	620	690	770	850	950	1050	1150	1300	1400	
Nominal Cooling Capacity		USRT	500	550	620	690	770	850	950	1,050	1,150	1,300	1,400	
Chilled Water Data	Inlet Outlet	°C	12 __ 7											
	Flow Rate	m <sup>3</sup> /h	302	333	375	417	466	514	575	635	696	786	847	
	Pressure Drop	mAq	4.6	5.5	5.8	3.3	3.5	3.5	3.6	3.9	4.0	6.6	6.6	
	Connection	B(inch)	8	10					12					
Cooling Water Data	Inlet Outlet	°C	32__39.5	32__40.2										
	Flow Rate	m <sup>3</sup> /h	500	498	561	624	697	769	860	950	1,041	1,177	1,267	
	Pressure Drop	mAq	6.2	7.2	7.6	10.8	11.3	9.9	10.3	8.3	8.8	13.8	14.2	
	Connection	B(inch)	10	12			14			16				
Electrical Data	Phase/Volts/Hz		3ø , 220V/380V/440V, 50Hz/60Hz											
	Motor Power	Absorbent Pump	KW	3.0(9.5A)					4.5(19.5A)				5.5(20A)	
		Refrigerant Pump	KW	0.4(1.42A)				1.5(4.0A)						
		Purge Pump	KW	0.4(1.6A)	0.75(2.5A)									
	Control Circuit		kVA(A)	0.3(0.5A)										
	Total Current		A	13.0	13.9		16.5		26.5				27.0	
	Wire		mm <sup>3</sup>	3.5					8					
	Power		kVA	8.6	9.2		10.9		17.4				17.8	
Dimension	Length(L)	mm	4,440	5,810		7,040		7,250		7,360		8,600		
	Width(W)	mm	1,910	2,100					2,500		2,800			
	Height(H)	mm	3,970	3,230					3,600		4,200			
Weight	Operating	Ton	12.6	20.0	20.8	24.1	25.3	27.8	28.6	37.2	38.0	42.4	43.2	
	Rigging	Ton	10.8	17.3	18.1	21.0	22.2	23.4	24.2	32.2	33.0	36.4	37.2	
	Consumption	kg/h	4,000	4,400	4,960	5,520	6,160	6,800	7,600	8,400	9,200	10,400	11,200	
Steam	Steam Inlet Connection	B(inch)	8	10				12		14				
	Drain Outlet Connection	B(inch)	21/2					3		4				
Tube Removal Space		mm	4,100	5,320				6,560				7,910		

## Note:

1. Working pressure of each water side is based on 1.0MPa (150psig)
2. Fouling factor 0.0001 m<sup>2</sup>.hr.°C/Kcal for Absorber, Condenser and Evaporator.
3. Min. outlet temp. of chilled water: 5°C
4. Min. allowable inlet temp. of cooling water: 20°C.
5. Controllable range shall be 0~100%.
6. Standard Power source is 3ph, 400V, 50Hz and available 220, 380, 440V and 460V power source.
7. Each water flow can be adjusted within 50~120%.

[www.fidartahvieh.com](http://www.fidartahvieh.com)

